

# CARONTAWAN

Special  
LD  
4481  
. P665  
. C3  
1941  
c. 2

1941



1941 - cop.2

Class 070.058


Book E31

STATE TEACHERS COLLEGE  
LIBRARY

Mansfield,

Pennsylvania





Digitized by the Internet Archive  
in 2011 with funding from  
LYRASIS Members and Sloan Foundation

<http://www.archive.org/details/carontawan1941ye00mans>



# Exhibris

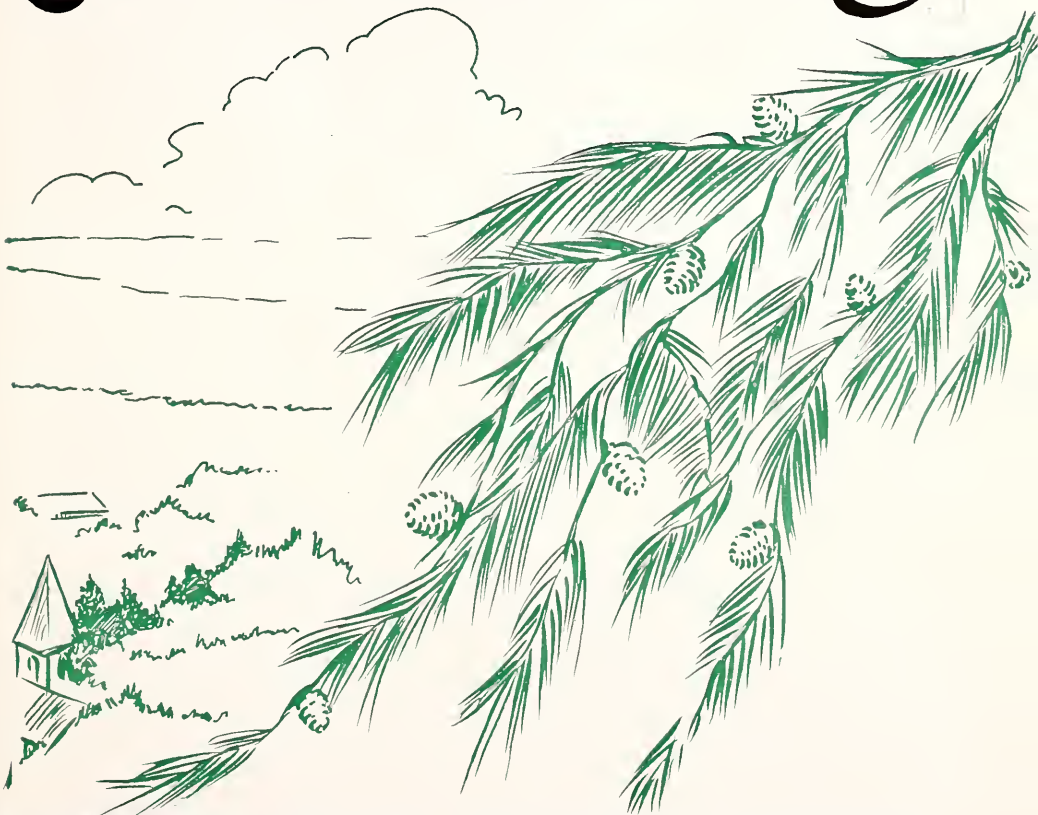


of  
The 1941



Published at

# Carontawan



**MANSFIELD STATE TEACHERS COLLEGE**  
*Mansfield, Pennsylvania*

**MANSFIELD STATE COLLEGE LIBRARY**  
MANSFIELD, PENNSYLVANIA

## *The College*

Administration  
Faculty  
Laboratory Schools  
Educational Museum  
Psycho-Educational Clinic  
Music Department  
Home-Making Department

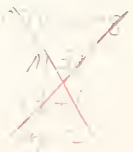


## *The Year*

Athletics  
M Club  
W.A.A.  
Flashlight  
Theta Times  
Cadence  
Carontawan  
Y.M.C.A.  
Y.W.C.A.  
Art Club  
Emersonian Club  
Omicron Gamma Pi  
Other Clubs  
Musical Organizations  
Dramatic Club

## *The People*

Councils  
Kappa Delta Pi  
Sigma Zeta  
Phi Sigma Pi  
Phi Mu Alpha  
Lambaa Mu  
Pi Kappa Epsilon  
Pi Gamma Mu  
Senior Class  
Junior Class  
Sophomore Class  
Freshman Class





## *Foreword*

This volume, the twenty-fourth in the series of Carontawans, has been made possible by the cooperation of the entire student body as a result of changing its publication from a Senior Class project to an entire school enterprise. The staff has had the advantage of working on a definite budget, but it also has labored under the disadvantage of a very limited budget that has made necessary a drastic reduction in size and in a number of innovations.

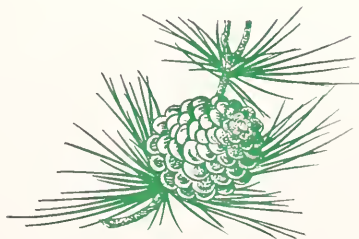
Regardless of all handicaps, we have tried to publish an annual patterned after the theme, "A Dramatic Picturization of Student Life at Mansfield in 1941". We shall feel that our purpose has been accomplished if in after years pleasant memories flood the minds of those who in their leisure moments leaf their way through this volume.





## *Dedication*

*We dedicate this volume both to the principles of democracy and to the part our college has played and will continue to play in the preparation of citizens for our democracy.*



The College









*Lester K. Ade*  
*President*

## *A Message From the President*

### *Mansfield's Contribution to Democratic Living*

In a real sense the college at Mansfield is a social laboratory in which students participate in democratic living. With participation and self expression as the keynote, the students make many of their own decisions and assume responsibility for the consequences of those decisions. Underlying the civic life of the College is the ideal of individual as well as social obligation whereby members are answerable to themselves and to the college community for their daily deeds and efforts.

Through such pursuits as self-government, dramatics, professional fraternities and sororities, and other group activities, as well as through the regular program of instruction, students acquire the necessary abilities, attitudes and appreciations for effective social and pro-

fessional living. Professional experience and skill are gained simultaneously with social experience. Students learn to live while they prepare to serve.

The fundamental objective of the program at Mansfield is to afford extensive and intensive opportunities for students—prospective teachers—to develop a well-rounded personality. An enthusiastic, cheerful and noble life lived in the presence of children and youth in our public schools will teach more effectively than any words or mere formal techniques.

The appreciation of this truth gives emphasis to those elements of college life which encourage students to live their highest and best, to become worthy of their great calling, and to be—by their character, industry, and charity—shining examples to all with whom they come in contact.

LESTER K. ADE







*Dean of Instruction*

A. T. BELKNAP

Modern democracy, the outgrowth of many centuries of hard and bitter experience of living together in which men have slowly learned both to obey and to command, is a practical recognition of individual differences in human beings whereby the superior powers of superior individuals may be used by them and by their fellows consciously, willingly and cheerfully for the mutual advantage of all. The practical blending of initiative and conformity with the proper adjustment of conflicting wills and varying talents to mutual necessities whether in a Norse ship, an Anglo-Saxon village, an American town, a European State, or a modern college is democracy. Like a ship, any democracy needs both captain and crew. For a true democracy all must lead and all must follow as they are able. Obedience and initiative are equally needed. The resulting "conflict of patterns which is the history of the world" has gradually produced the current frame of democracy in its evolution, past, present and future toward a more useful and comfortable human society. As longer time is spent now in school, years which other generations spent in work and in war, it becomes constantly more important to have in education that give-and-take which produces and which is democracy. This is not a "model" democracy, falsely so-called where the model has been sometimes defined as a "little imitation of the real thing", not a liberty which is license, nor fruitless bolsheviki player camouflaging tyranny, but real democracy which is the use of the common wisdom of the common mind working for the common welfare. Here not only in state and church, but in business, education and social life, everywhere, government is "of the people, by the people, and for the people." This is a soundly democratic and progressive philosophy of education and life based on mutual good will, trust and confidence, respect and assistance which by the blessing of God shall never perish from the earth.



## *Miss Wasley*

Student life at Mansfield State Teachers College is based on the fundamental principles of American democracy. Most respected and worthy of these principles is the preservation of human rights, which emphasizes the value of human personality. Accordingly, each individual is influenced to develop his personality so that it may inspire the respect of others. Important qualities to be considered are humanity, humility, and humor. By developing these qualities, one finds his college experience assuming new meaning and his conception of citizenship in a democracy taking on new significance.

## *Dr. Steele*

America is preparing to defend democracy. This brings us face to face with the problem of defining democracy. College men and women all over the country are asking themselves the very important question, just what are we preparing to defend. To answer this question, it would seem necessary for each and everyone of us to re-state and practice the principles of democracy as they were laid down by the founding fathers of our country, and as they have operated to obtain and conserve those liberties for which many peoples of the world have sacrificed so much. May we in our college activities learn to think and act democratically, and rededicate ourselves to the preservation of the liberties which democracy has brought us.



## Faculty



ALGER, HUGH W.  
Science and Supervisor of Eighth  
Grade

ALLEN, ELIZABETH S.  
English, Assistant Dean of Women

ASHENFELTER, MRS. NELLIE  
Music, Elementary and Junior High  
School

ATWATER, CORA  
Voice

BELKNAP, DR. ARTHUR T.  
Dean of Instruction

BEYER, LEONARD K.  
Biology

BOWERS, HELEN  
Office

BROOKS, MARJORIE C.  
Harmony, Dictation, Music History

BUCKINGHAM, LILLIAN E.  
Chemistry

BUNN, MARGARET M.  
Office

CASS, GEORGE W.  
Social Science

CASWELL, WILLIAM E.  
Industrial Arts

CHATTERTON, IRVING T.  
Oral Expression

CURE, JOHN  
English; Education

DARRIN, CHARLES  
Head of Publicity Department

DAVIS, PAUL J.  
Social Studies

DIETSCHKE, HELEN F.  
College Nurse

DOANE, STELLA  
Librarian

DOANE, DR. JOHN H.  
Physician; Health Education

DOANE, ALICE H.  
Latin; English

DOUGHTON, DR. ISAAC  
Director of Laboratory Schools  
Instruction

## Faculty

ERICKSON, C. AILEEN  
Clothing

FARRER, MARYON  
Foods and Nutrition

FEIG, CHESTER A.  
Education

FRANCIS, BERTRAM W.  
Band Leader; Instrumental  
Instruction

GILBERT, CHARLES  
Handwriting; Elementary

GILFILLAN, J. ALEX  
Piano; Mixed Chorus

GILLETTE, EMMA  
German; English

GRANT, HERBERT  
Chemistry; Physics

GREELEY, GERALD E.  
Piano; Organ

GRIGSBY, JESSIE I.  
Mathematics and Supervisor of  
Ninth Grade

GRIGSBY, MILDRED L.  
Supervisor of Grade Six

GWINN, DR. CLYDE W.  
Social Science; Education

HABEGER, LORENE M.  
Supervisor of Grade Two

HANCOCK, LEAH A.  
Homemaking Supervisor

HEWSON, EDNA  
Registrar

HOPKINS, MARGARET  
Supervisor of Grade One

HUTCHINSON, DOROTHY  
Supervisor of Grade Four

JOHNSON, GLENN  
Men's Physical Education

KEENEY, EDYTHA  
Junior High School Nurse

KING, HATTIE  
House Matron

LEBERMAN, JANETT  
Biology and Chemistry



## Faculty



LLOYD, S. MANFORD  
Mathematics

MARVIN, KIMBLE G.  
Health Education

MANDELKERN, BERNARD  
Orchestra; Violin Cello



MANSER, HERBERT E.  
French and Latin

MARSH, EDNA P.  
Supervisor of Grade Three

MATTSON, MAY M.  
Home Management



McKINNEY, LILLIAN W.  
Dietitian

MORALES, ELIZABETH B.  
Director Home Economics

MORGAN, JAMES G.  
Education; Director of Secondary  
Education Curriculum



MORRIS, MARGARET R.  
Girls' Physical Education

MURPHEY, S. MARJORIE  
Art

CHARLOTTE NIXON  
Bookroom Clerk



O'BRIEN, MARGARET T.  
English and Supervisor of Seventh  
Grade

OLMSTEAD, EMMA M.  
Secretary to the President

PALMER, BERTHA  
Clerical Assistant in Library



PALMER, MRS. EVELYN  
Homemaking

PARSONS, LOUISE  
Secretary to Dean of Instruction

PERKINS, ELSIE R.  
Voice



PHIFLER, MARTHA  
Supervisor of Grade Four

PIERCE, CORA B.  
Secretary to Administrative Assistant

RANDALL, CLARISSA A.  
Vested Choir; Music Appreciation

REHBEIN, LAURA E.  
Book-keeper



## Faculty

REIMARD, GRACE M.  
Mansfield High School, Cooperative  
Teacher

RETAN, DR. GEORGE A.  
Director of Laboratory Schools

ROSS, BLANCHE R.  
Education

SAALBACH, MARIE  
Supervisor of Grade One

SCHIPBANKER, FRANCES  
Art, Elementary and Junior High  
School

SCHLAPPI, CYNTHIA B.  
Office

SCOTT, MARIAN E.  
Kindergarten

SMITH, KENNETH  
College Business Manager

SOPER, ROSS  
Receiving Clerk

STALFORD, ELIZABETH P.  
Supervisor of Grade Five

STEELE, PAUL J.  
Dean of Men

STEELE, REA J.  
Librarian, Elementary and Junior  
High Schools

STOUT, Dr. CYRIL L.  
Geography

SWAN, ELIZABETH M.  
English

THIEMAN, VICTORIA H.  
Revenue Agent

WHITNEY, DOROTHY  
Clerical Assistant and Book-keeper

VIZAY, MRS. MARIAN G.  
Clothing

VOSBURG, HOWARD  
Superintendent of Grounds and  
Buildings

WARREN, LOREN A.  
Instrumental Supervisor of Music in  
Training School

WASLEY, DOROTHY M.  
Dean of Women

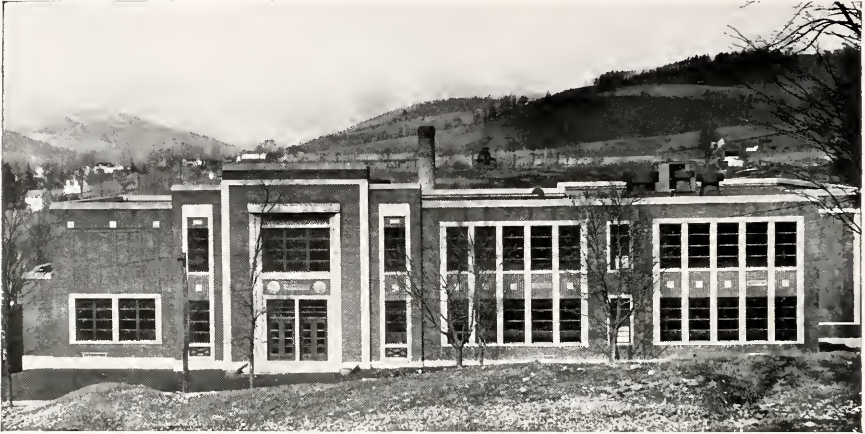
WEBSTER, DR. MYRON E.  
Social Studies

WOLCOTT, MARIAN  
Assistant Librarian

KVACKY, FRANCES (Absent)  
Supervisor of Grade One



## *The Elementary Laboratory School*



Today we are greatly concerned with the problem of developing good citizenship. Since our book is dedicated to Democracy we should follow this theme through and note where our Elementary Laboratory School fits in. The Laboratory School is constantly increasing the emphasis on social qualities and social groupings. An activity is suggested by the children, discussed under the direction of the teachers, after which the final plans are worked out by the group. Through the use of this method the children do everything concerned with the activity that it is possible for them to do. One progressive practice of the school is that of chronological promotion. The report cards place emphasis

on social qualities and social groupings which have almost entirely replaced ability groups. Primary emphasis is laid upon the inculcation of right ideas of group conduct, individual self-control, and individual responsibility. These and many more are the objectives of good citizenship which are taught in our Laboratory School.

The new Elementary Laboratory School affords a wider range of opportunity for both the student teachers and for the pupils, giving the instruction through the activity program, which tends to promote citizenship, cooperation, and industry. The fundamental tools of learning such as Reading, Writing and Arithmetic are also stressed at this point in child education.

## *The Supervisors*



Back Row—Phifer, Hutchinson, Scott, Retan, Steele, Hopkins, Morris, Keeney.  
Front Row—Schipbanker, Habeger, Ashenfelter, Marsh, Kvacky, Bowers, Stallford, Grigsby.

The Supervisors in our laboratory schools have a two-fold function to perform. First they have their grade or subject to supervise over. Secondly they must act as guides, critics and as examples to the student teachers. They are well known to all student teachers, many still give helpful information to the former students out in the field. They are always on hand to give helpful advice to problems that confront the student teacher, along the line of discipline, techniques of teaching, and subject matter presentations. Their job is difficult for many activities enter into performing it skillfully. They have to deal with many different personalities, seeking from each the best possible. It should be emphasized and remembered by all, that the Supervisors are the true friend of the student teachers while in school or out of school. Every one is willing to give whatever aid possible to improve the student and practice teaching difficulties.



## *Student Teachers*



The Elementary Laboratory school gives the student teacher his first real contact with those experiences he will later meet in his work in the field. Here he learns to accustom himself to conditions hitherto unfamiliar. He now has an opportunity to correlate the theory learned in the college classroom with the curriculum devised for the children. Where changes in theory are necessary to fit the present needs, he has at his com-

mand the knowledge of supervisors well versed in the dynamic problems of elementary teaching.

As the student teacher learns to devise his plans for classroom recitation, he gradually establishes a background for future reference. He learns of the need for variety programs and of the benefits derived from visual aids. As the student teacher develops in this new channel of endeavor, so the children begin to realize that there is a tieup between the study of the "R's", recreation





and living. They, the children, now have an opportunity to express themselves in some form of creative art.

The teachers utilize such practices as to permit a general air of informality and yet enable them to maintain a well ordered and disciplined class room attitude. At each quarter

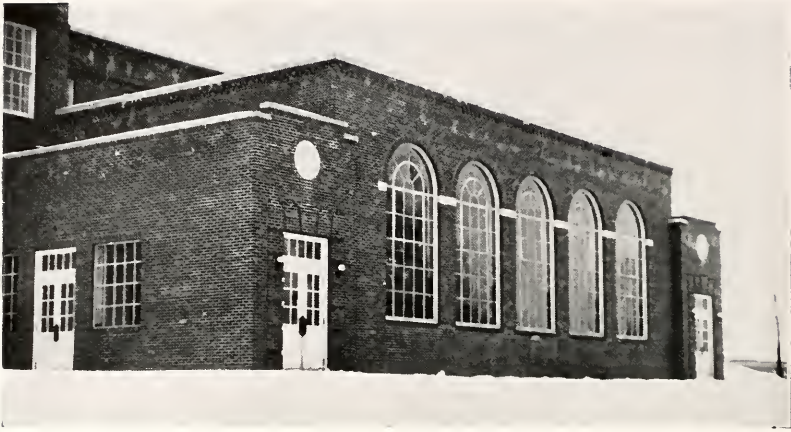


the student teacher tabulates each child's achievement in a manner relative to the ability of each particular child.

Again, we must remember that no word of praise is too great for the supervisors and the part that they play in the growth of the student teachers.



## *Junior High School*



The Junior High School along with the Elementary Laboratory School is one of the most important buildings on the campus at Mansfield. It is in these buildings that the College Student Teacher first receives the experience of facing a class of students on his own. Besides affording the college students teaching experience in teaching, the Junior High serves the pupils; that is in giving the pupil exploratory opportunities with emphasis on the individual's physical, emotional and social life.

Through supervision by department heads, the materials and methods of teaching are kept up-to-date in all classes, giving both the pupil and the student teacher benefits.

Many activities are carried out at the Junior High School, through the use of the Gymnasium-Auditorium, and a well-

equipped Industrial Arts Shop, a Household Arts Department, Art Shop, and Library. The Gymnasium-Auditorium is the scene of many activities including weekly assembly programs furnished by different classes throughout the year, as well as the center of many types of sports and musical programs. The Industrial Arts Shop offers opportunities in some degree to pupils along the line of printing, woodworking, metal artworking, tanning of hides, and pot and clay working. The Household Arts Department gives instruction in sewing, interior decorating and many other homemaking projects. In this department is included the Cafeteria where noon lunches are served during the winter months by the College Homemaking Juniors. The Library includes many books useful and interesting to the adolescent boy and girl.

## *The Supervisors*



Caswell, Davis, Alger  
Hancock, Grigsby, Doughton, O'Brien, Schipbanker

The Student Teacher receives excellent training and experience, including regular conferences with department supervisors, in which are given helpful criticisms and suggestions for improvement in classroom technique.

The working success of this plan is due to Dr. Retan and his staff of supervisors in the interest and patience shown toward the student teachers in making their work more interesting.

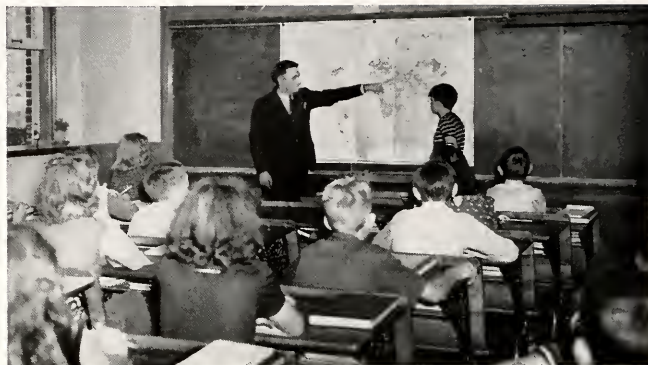
## *Supervisors of Special Fields*



Johnson, Morris, Ashenfelter, Marvin



## *Familiar Situations*



In the Junior High the student finds himself in an atmosphere in which he is better able to make any adjustments that he must make before he is able to enter into the teaching profession. The activities which help to make up this atmosphere consist of a Home Making course, shop work, regular academic courses, and a well rounded music curriculum.

The building, comparatively new, possesses large, well ventilated rooms and all necessary equipment. Assemblies, sports-meets, organization meetings and gym classes are held in the gymnasium. The library has books having a special interest to children of Junior High level, as well as books beneficial to the student teacher. The school shop contains among many machines a print-





ing press which does considerable work for the college. During the winter months, the Home Making teachers operate a much patronized cafeteria where delicious lunches can be had "but reasonably." For practical training for the girls, there are cooking and sewing laboratories excellently equipped.

Here under the watchful and guiding eye of a supervisor, the student teacher first meets and learns to

solve some of the problems dealt with in secondary education. Here he develops the necessary attitudes to cope with the classroom difficulties he will later face in his own class-room. Here he begins to realize more fully that the student of Junior High School age has his own set of values and that the adolescent student must be taught to re-evaluate some of his concepts to better fit his relative position in society.



## *Educational Museum and*



The Educational Museum is a new and notable addition to the instructional facilities of the college. A unit of the Pennsylvania State-wide Museum Extension Project of the visual educational device for the use of not only the personnel of the college, the campus elementary and junior high laboratory schools, and the Mansfield Senior High School, also all educational groups and interested citizens of Tioga County and surrounding service area.

Some of these exhibits are: a series of colorful dioramas depicting the life and work of all periods, in all parts of the world. The display theme is then developed through various groups of exhibits dealing with specific conditions and activities, including nature and natural resources, housing, clothing, nutrition, and industry.

Guide at the museum is Mr. Donald V. Hoard, of Mansfield, who was appointed to this position by the WPA. The museum is open daily, Monday through Friday, from 9 a. m. to 12 noon and from 1 p. m. to 4 p. m. There is no admittance charge at any time, and visitors are cordially welcome.



## *Psycho-Education Clinic*



The Psycho-Education Clinic, the first in northern Pennsylvania, has been set up on the campus through the efforts of Dr. Lester K. Ade, Mr. James G. Morgan, and Mr. Irving T. Chatterton, and promises to answer a long felt need over a wide area.

The purpose of the clinic is to serve the needs of children and young people who are experiencing difficulties in adjusting in educational and social situations. The plan of the clinic is to approach the problem of the child through a study of his physical, intellectual, emotional, and social needs.

The clinic is located in the former laboratory school building, in which are situated also quarters for instruction in psychology, educational measurements, speech, handwriting, the teaching of reading and arithmetical computation, children's literature, piano and other professional activities. Here, four rooms on the first floor afford space for the psychological laboratory, the reading laboratory, psychometric testing and conference room which constitutes

the clinic. Also an adjoining auditorium seating about 200 persons, provide room for demonstration and large group meetings.

The clinic is equipped with a Fairchild voice-recording machine for studying habits of speech, a Maico audiometer for testing hearing, a Betts telebinocular for testing vision, and a Metfessel dynamometer for testing muscular coordination and motor control, as well as complete psychometric instruments.

The personnel of the clinic consist of Mr. Morgan, director; Mr. Chatterton, assistant director; Dr. John H. Doane, medical adviser; Miss Helen F. Dietsche, registered nurse; Miss Blanche R. Ross, reading and spelling consultant; Mr. S. Manford Lloyd, arithmetic consultant; Mr. Charles S. Gilbert, handwriting consultant; Dr. Chester Feig, education consultant. Both Mr. Morgan and Mr. Chatterton are specially trained in various phases and aspects of child guidance. All members of the group are personally interested in psycho-education activities.



## *The Music Department*



Warren, Francis, Gilfillan,  
Mandelkern, Brooks, Ashenfelter, Randall, Awater, Perkins, Greeley.

The Music Department of Mansfield State Teachers College offers one of the finest music courses in the state and gives the student a well-rounded preparation for teaching. Upon entering the college as a Freshman, the student is individually guided by his or her advisor. The advisor stimulates the interest of the student in the cultivation of particular talents. After four years of study, the student is well equipped to fill the position of music teacher in the public schools. This intensive training is given for professional and cultural purposes. In the first two years subject matter is emphasized.

Later the development of the professional side is stressed along with the subject matter.

This year Mr. Bertram W. Francis, a new member of our faculty, holds the position of Dean of Music. In addition to this, Mr. Francis conducts the symphonic band and gives private instrumental lessons. Mr. Alex Gilfillin, who comes to us from Pittsburgh, directs the mixed chorus and serves as an instructor in various musical subjects.

Each year the Music Department presents some special musical events. This year, under the chairmanship of Mr. Mandelkern, the



committee is planning a music festival in May. Concerts and recitals given at Commencement culminate the year's work. These events offer excellent opportunities for artistic growth within the individual.

The Music Educator's Club, consisting of all the students and faculty in the department, unites the group into one. In the monthly meetings musical and educational programs are heard. The Cadence, an annual placement magazine under the editorship of Charles Jacobson this year, is the major project of the Club.



MR. BERTRAM W. FRANCIS  
Head of Music Department



SCENE FROM 'THE MIKADO'



## *Homemaking Department*

MRS. MORALES

Director of Homemaking Department

The Homemaking Department of Mansfield State Teachers College has earned the reputation for having one of the finest homemaking courses in the state. Mrs. Elizabeth B. Morales is head of this department. This course especially prepares young women for the teaching profession, but it is so comprehensive that other types of positions related to homemaking are open to its graduates.

Each year the classes are taken on a field trip for such courses as home management, foods, nutrition, family health, and methods of teaching. The principles and procedures are taught in class but because there is so little time for practical work to develop skill and confidence the young women are required to do summer projects, which actually supplement class work.

In the Junior year the young women spend six weeks in managing the school lunch at the Junior High School. The lunches are planned with consideration of nutritional value, palatableness, and attractiveness, and at a minimum cost of the food. High standards are set up in all phases of this work. This experience in college gives the students practice under supervision in school lunch activities, thereby preparing them to better meet school lunch problems in the public schools.



### *Canned Goods Exhibit*

Six more enjoyable weeks of the junior year are spent in the home-making apartment. From six to eight young women live together with a faculty member. As a family, these girls carry out the duties of a homemaker. Marketing, preparing food, entertaining, and doing the general household duties are some of the experiences in home management.

Fashion shows, food demonstrations, dinners, teas, dances, are an interesting and worthwhile part of the activities of the department.

The course as offered at Mansfield meets the requirements for teacher certification in Homemaking Education, and in addition each student may be certified in another field based upon individual interests in the selection of electives.

### *Home Management*



The Year









*School Begins*







*We Played  
Football  
in 1940*



COACH GLENN JOHNSON





THE 1940 FOOTBALL SQUAD

After the high honors which the football teams of the past two years have won for us, the record of the past year may seem somewhat objectionable. We must first, however, take into account several factors which had much to do with the success of the season. The first of these is the fact that so many of the more experienced men were lost through graduation. Also, owing to the lateness of Mr. Johnson's appointment to office, the team had no chance to get under way until shortly before the season started in earnest. Our boys went into the first few games with insufficient practice and although they fought with all they had, they were forced into defeat. As the season progressed, so did our ability for getting the "bad breaks". Some of the star players were lost through injuries and, in fact, there was scarcely a game in which we were not handicapped in this way.

When we view these facts it seems marvelous that the team functioned as well as it did. The fighting spirit exhibited by the players was of the highest, and not once did they give

up in the face of insurmountable difficulties and numerous disappointments. It seemed as though all of us who witnessed these struggles of might will bear witness to these facts and the school should rise and "give a hand" to the members of that fighting eleven, "The 1940 Mountaineers".





Jones—Guard. Co-captain

Kisilewski—Fullback. Co-captain.

Brannan—Center

Cheplik—Quarterback.

### *Edinboro-0*

The Mansfield gridsters opened the 1940 season with an impressive 39 to 0 win over Edinboro. The team showed power, deception, and teamwork. Led by the shifty halfback, Magalski, the Mountaineers scored almost at will. Balderson, a new-

### *Mansfield-39*

comer, and Co-captain Jones paved the way for several long runs by the fine brand of blocking they produced. The holdovers from last year's team displayed their usual calibre of play.



Cunningham—Guard Dowd—Quarterback Lentini—Left Halfback Mancia—Left Halfback.





Markle—Tackle    Martin—End    McGraw—End    Magalski—Left Halfback.

### *Mansfield-40*

The Mountaineers' power proved too much for a weak Bloomsburg team as score after score was piled up. The Mansfield eleven was aided by frequent fumbles in the Bloomsburg backfield. This, plus a fine running attack and well-executed aerial plays, led to Bloomsburg's downfall.

### *Bloomsburg-0*

Co-captain Kisilewski tallied three times for the Mansfield squad, while Liparulo and Lentini garnered the other scores. Bobby Dowd, diminutive quarterback, place-kicked the extra points. Mansfield had a total of twenty first downs, while Bloomsburg was held to six.



Liparulo—Left Halfback    Piccolo—Tackle    Rodsly—Center    Thrush—Right Halfback.



### *Millersville-20*

Before a Parents' Day crowd, the Mansfield squad suffered its first setback of the 1940 season. The Mountaineers, led by swivel-hipped Bob Magalski, scored in the first minute of play; but from there on the power of Millersville dominated the lighter, faster play of the Mansfield team.

After the initial burst of scoring,

### *Mansfield-6*

the two elevens battled through two scoreless periods until late in the final quarter, when the Millersville aggregation shoved across two tallies.

The game was a costly one for Mansfield, because Magalski, Kisilewski and Lentini were injured.



### *Mansfield-0*

The Mountaineers travelled to Indiana State Teachers College and met defeat by the score of 14 to 0. The game, one of the year's best, was outstanding for the fine sportsmanship exhibited by both teams. Schwing, Cutler, Schmucker and Corey formed the keystone of Indiana's attack;

### *Indiana-14*

while the stellar playing of Jones, Brannan, and exact passing of Parente made Mansfield a constant threat. Mansfield entered the contest minus the services of such versatile performers as Kisilewski, Magalski and Lentini.



### *East Stroudsburg-19*

Mansfield entered the game determined to halt Stroudsburg's winning streak but despite stiff opposition, Stroudsburg managed to shove over a score in the initial period and two more in the last stages of the game.

Although the first quarter was featured by the plunging of Kisilewski and the line's defensive work,

### *Mansfield-0*

Stroudsburg, led by its great back Kearns, pushed over a score. The second half was highlighted by the slanting runs of Lentini and defensive work by Jones and McGraw. Stroudsburg's remaining points were also accounted for by Kearns, who hit pay-dirt twice in the final period.



### *Cortland-0*

The Mansfield squad cut down a big and determined Cortland eleven 7 to 0, and thus ended the home season with a victory.

The first quarter found both teams waiting for breaks which did not present themselves. However, in the second quarter Kisilewski flipped a pass to "Chick" Marra, who swivelipped his way to the goal line. Mar-

### *Mansfield-7*

ra proved the game's outstanding star by ripping off several large gains and opening holes for his teammates. Tom Brannan, probably the best center in the conference, was by far the best defensive player in the contest. This stocky lineman made tackle after tackle and broke up the Cortland running attack repeatedly.





### *Mansfield-o*

Mansfield journeyed to Lock Haven and played the Bald Eagles to a stand-still for three quarters; then weakened momentarily and allowed Don Campbell, burly Lock Haven back, to run forty yards for a score.

Co-captain Kisilewski repeatedly set Lock Haven back on its heels with magnificent kicks against a cold, cutting wind. Piccolo, one of

### *Lock Haven-6*

the team's most consistent payers, stopped many Lock Haven plays in their tracks. The Parente to Thrush pass combination featured the Mansfield offensive and accounted for many gains. Co-captain Jess Jones played this, his final college game, in the stellar fashion for which he has become noted.







## *Base Ball*

### *Spring Practice*

### *Record 1940*

May 3	Mansfield 24	Lock Haven 1
May 4	Mansfield 7	Indiana 7
May 14	Mansfield 10	Lock Haven 4
May 17	Mansfield 9	Bloomsburg 6

### *Schedule 1941*

April 19—East Stroudsburg—Home.  
 April 23—Lock Haven—Away.  
 April 26—Cortland—Home.  
 April 30—Ithaca—Away.  
 May 3—Open.  
 May 6—Lock Haven—Home.  
 May 9—Bloomsburg—Away.  
 May 10—East Stroudsburg—Away.  
 May 14—Ithaca—Home.  
 May 17—Bloomsburg—Home.  
 May 21—Cortland—Home.  
 May 24—Alumni—Home.

# Basketball



Elmer S. Stevens—Student Manager.  
Leo McDonald—Captain.  
Glenn Johnson—Coach.

## Schedule

Alfred Aggies .....	Away	36	28
Lock Haven .....	Away	39	34
East Stroudsburg .....	Home	42	70
Kutztown .....	Home	31	28
Cornell .....	Away	30	40
Ithaca College .....	Away	42	52
Lock Haven .....	Home	40	42
Bloomsburg .....	Home	47	62
St. Bonaventure .....	Away	42	49
Cortland .....	Home	31	33
Millersville .....	Away	41	47
Bloomsburg .....	Away	38	57
Ithaca .....	Home	29	32
East Stroudsburg .....	Away	30	76
Rochester M. I. ....	Away	53	52
Rochester M. I. ....	Home	25	26

## Games

Mansfield—36      Alfred Aggies—28

In the first game of the 1940-41 season, Mansfield defeated an excellent Alfred team 36-28. Coach Johnson's charges led throughout the game, and each member of the squad

saw action. Skerpon led the scoring with eleven points; McDonald and Jacobson followed with six each.

Mansfield—39      Lock Haven—34

For the first time in years the Mountaineers defeated Lock Haven at Lock Haven. Getting off to a fast start, Mansfield led 29-20 at the half. A smart conservative game held the Lock Haven team the second half and the lead never changed hands. Skerpon again led the scoring with 13 points. Stavisky, Cunningham, and Butsavage played important roles in this victory.

East Stroudsburg—70      Mansfield—42

In the first home game of the season, Mansfield met and was defeated by East Stroudsburg. Height and experience were the deciding factors in this contest. The Mountaineers had difficulty in taking the ball off the backboard and were forced to play a defensive game throughout the evening. Skerpon and Frenchko were outstanding for Mansfield.

Kutztown—28

Mansfield—31

Kutztown came, saw, and was conquered. Paced by Moe Jacobson's ten points, and steadied by the sparking defensive work of Jack Doane. Mansfield topped the visiting five by a 31 to 28 score. The triumph constituted the Mountaineers lone victory on the home court.

Mansfield—30

Cornell—40

Mansfield was defeated by Cornell's J. V. at Cornell, 40-30. It was decidedly not Mansfield's night. The game was marred by rough playing, which resulted in numerous fouls.

Mansfield—42 Ithaca College—52

Mansfield was defeated at Ithaca in a much closer game than the score indicates. It was very close until the closing minutes when Ithaca began sinking two-pointers from all angles. Butsavage, Skerpon, Jacobson, Lee, and Griffith were outstanding.

Lock Haven—42

Mansfield—40

Smarting under the recent defeat at the hands of the M. S. T. C. courtmen, a rejuvenated Lock Haven aggregation came to Mansfield and eked out a 42 to 40 win. Captain Leo McDonald enjoyed his best night of the season, scoring sixteen points and leading the defensive work of the team.

Bloomsburg—62

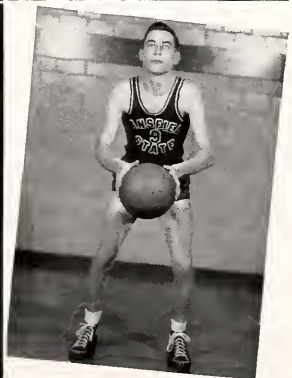
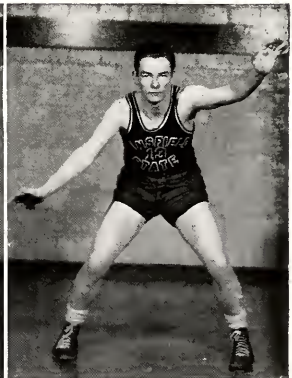
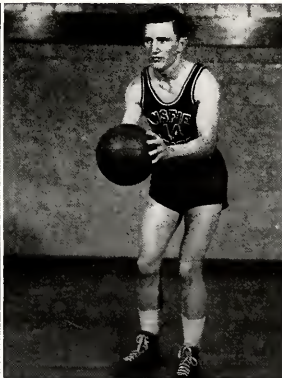
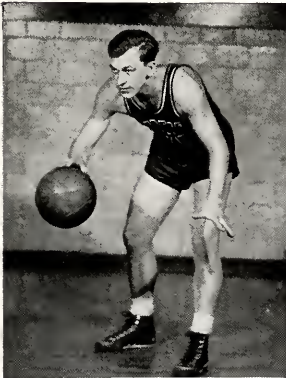
Mansfield—47

Although Skerpon, McDonald, and Jack Doane tallied seventeen, nine, and ten points in that order, a veteran Bloomsburg team experienced little difficulty in piercing the Mansfield defense and carrying away a 62 to 47 win. The Mountaineers played erratic ball, at times flashing brilliantly, and at others appearing apathetic.

Butsavage—Guard

Cawley—Forward

Cunningham—Guard  
E. Doane—Center



Mansfield—42 St. Bonaventure—49

The Johnson coached men gave the "Bonnies" a real scare. It was nip and tuck all the way. Tied at the half 26-26, the "Bonnies" came out and gained a 7 point lead which could not be overcome. Skerpon led the scoring with 15 points; Stavisky, Cawley, and Jacobson also played a fine game.

Mansfield—41 Millersville—47

Mansfield met and was defeated by a much taller Millersville outfit, but the outcome was in doubt until the final whistle was blown. It was another thriller, but as in other games this year Lady Luck was not with us. Skerpon, with 20 points, was outstanding. Butsavege, with 9 points, and Jack Doane played very capably.

Cortland—33 Mansfield—31

Flawless floorwork and good offensive basketball were of no avail as M. S. T. C. fell before Cortland 33 to 31. Skerpon, Jacobson, and Frenchko were the outstanding performers for the Mountaineers.

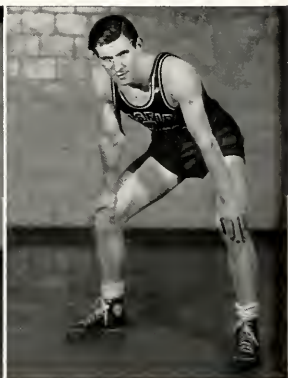
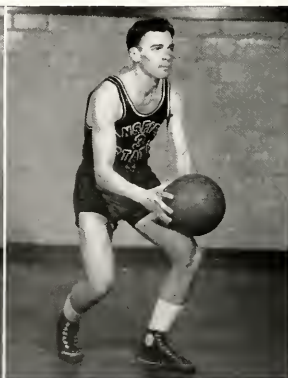
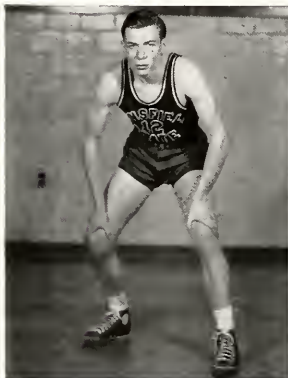
Mansfield—38 Bloomsburg—57

Mansfield, handicapped by Bloomsburg's small floor and by a lack of height, went down to defeat 57 to 38. A disastrous first half cost Mansfield the game. Bloom led at the midway point 28 to 9. McDonald led Mansfield's scoring with 12 points, and was closely followed by Jacobson and Cawley with 10 and 9 points respectively.

J. Doane—Forward

Frenchko—Forward

Griffith—Forward  
Jacobson—Center





Ithaca—32

Mansfield—29

Offensively and defensively Mansfield was the better team, but poor work at the foul line cost the Mountaineers another game by the slight margin of 32 to 29. The home five had eleven free throws and succeeded in only three of these attempts. Skerpon with twelve tallies and Cawley and Jacobson with six each led the scoring.

Mansfield—30 East Stroudsburg—76

As you can see by the score, the Mountaineers were completely outclassed. It was mostly a story of height. Mansfield had one man over 6 feet tall and Stroud had ten over 6 feet tall.

Mansfield—53 Rochester M. I.—52

This was a game which Mansfield pulled out of the fire instead of be-

ing beaten in the second half. At the end of 3 quarters of play Rochester led 45 to 35. Then McDonald and Skerpon started tossing them in. McDonald and Skerpon led the scoring with 15 points each. Bill Doane performed very capably after Jacobson left on fouls in the second quarter.

Rochester—26

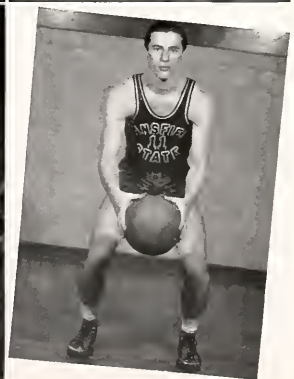
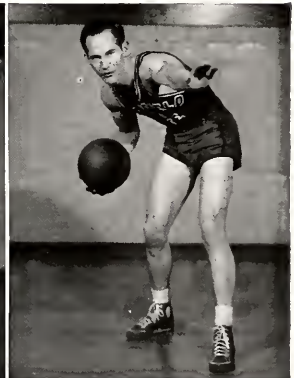
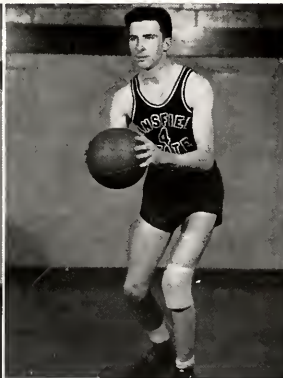
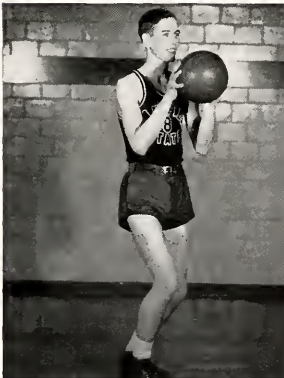
Mansfield—25

In a heart-stopping closing game, Rochester Mechanics topped Mansfield 26 to 25. Both teams played stellar ball throughout, with the Mountaineers leading most of the way and Rochester only succeeding in closing the gap and moving in front in the closing minutes of play. Jacobson topped the scorers with eleven points, while Skerpon was close behind with ten.

Lee—Center

McDonald—Guard

Stavisky—Forward  
Skerpon—Forward





Frenchko, Williams, Kelly, J. Doane, Stevens, B. Doane, Hawkins, Blackwell.

## Tennis

### 1940 Scores

Mansfield 5	Stroudsburg 2
Mansfield 7	Cortland 2
Mansfield 6	Stroudsburg 2
Mansfield 7	Bloomsburg 2
Mansfield 7	Cortland 2



### 1941 Schedule

April 19—East Stroudsburg—Home.  
 April 23—Lock Haven—Away.  
 April 26—Cortland—Home.  
 April 30—Open.  
 May 3—Open.  
 May 6—Lock Haven—Home.  
 May 9—Bloomsburg—Away.  
 May 14—Open.  
 May 17—Bloomsburg—Home.  
 May 21—Cortland—Away.  
 May 24—Alumni—Home.

*Our  
Tennis Team  
Was a Winner*

Paced by the veterans, Frenchko, Hawkins, J. Doane, and B. Doane, the tennis team opened the season with a decisive 5-2 victory over East Stroudsburg.

A few days later the squad journeyed to Cortland and defeated that team by seven matches to two. The newcomers, Kelly and Williams, showed only a trace of the nervousness which hampered them in the first match.

Stroudsburg suffered its second setback at the hands of the M. S. T. C. courtiers, six

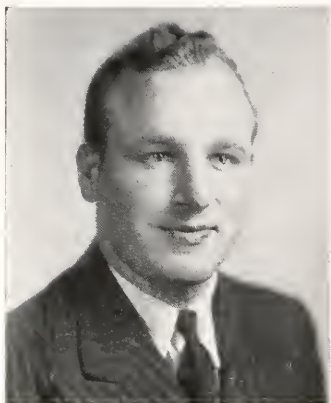


matches to two. By this time it was obvious to all that Mansfield would have little trouble in hanging up another perfect record.

Bloomsburg offered little or no resistance to the Mansfield netmen and was swamped seven to two.

The finale of the season came when Cortland came to Mansfield to meet with a seven to two loss. The home team was at its peak and dropped but a few games to the invader.





President—John Kisilewski

## "M" Club

The "M" Club is a men's organization for athletes who have participated in at least half of the engagements of the sport in which they desire to earn a letter, and for managers and cheer leaders who after faithful service pass successfully the rigid initiation requirements that all members must possess.

The purpose of the "M" Club is to promote and stimulate good sportsmanship, wholesome living, and a spontaneous and loyal school spirit. Good athletics and school spirit are inseparable. However, it must be remembered that it is impossible to turn out fine athletic teams continuously, and too, that win, lose, or draw, the athletes are out there doing their best and therefore deserve a loyal following.

This year, there has been a switch in sweater styles from the white slip-overs to the more practical maroon coat sweater. The seniors received their sweaters in the fall and then the club voted to adopt a new policy—namely, to provide each active member with an "M" sweater. Certainly, any man should feel honored to be allowed to don this sweater, symbolic of some form of athletic effort and achievement.

Back Row—Thrush, Markle, McGraw, Stavisky, Brannon, Jacobson, Thomas.  
Front Row—McDonald, B. Doane, Botsavage, Mahon, Kisilewski, Jones, J. Doane.







First Row—A. Durkin, M. Jones, J. Morrison, J. Clare, F. McGavin, M. Hess, B. Ebinger, E. Lownes, M. Weissenfluh, G. Whitmore, E. Smith, J. Burtin.  
 Second Row—E. Hardy, V. Varcoe, A. Hart, J. Wehr, E. Beardslee, P. Devling, M. Danneker, L. Reynolds, H. Monahan, M. Auvil, H. Hubert, G. Botterbusch, R. Downs, B. Fredricks.  
 Third Row—M. Phillips, H. Davies, R. Lutz, N. Ross, G. Rauch, K. Appleman, C. Skinner, H. Patrick, M. Smith, M. Satterthwaite, L. Diefenbacher, Z. Shelhamer, A. Smith, C. Etsweiler, R. Diefenbacher, G. Grove.  
 Fourth Row—R. Steigerwalt, I. Koch, E. Hoffman, J. Farrer, D. Doll, J. Lent, A. Davidheiser, F. Terwilliger, A. Strickland, D. Seipp, M. Morley, L. Hess, I. Thomas, L. Hellman, J. McHenry, F. Singley.

## Women's Athletic Association

The Women's Athletic Association, under the direction of Miss Morris, affords the girls an opportunity to take part in various sport and recreational activities.

At all seasons throughout the year, activities are carried on, some of them climaxed by a tournament. The participant or winning team in the competitive activities is given some form of recognition.

Swimming, tennis, archery, hockey, hiking, and outdoor roller skating are the outstanding fall activities. During the winter months, attention is focused upon basketball and indoor recreation such as table tennis, shuffleboard, badminton, volley ball, and indoor roller skating. Sleds and skis are available for the ever popular coasting and skiing.

With spring, softball comes to the foreground, and tennis, swimming, archery, badminton, and hiking are again renewed.

The equipment for all sports is owned and furnished by the Women's Ath-

letic Association. Each member who earns the required number of points for participating in the various activities, receives an "M" in recognition of her achievement.



President—Martha Danneker



Editor—Robert Van Horn



Business Manager—Kenneth Swift

## *The Flashlight*

The Flashlight, the college newspaper, strives to present a vivid cross-section of the life at Mansfield. The board of editors and staff writers is composed of students from each department of the college, and all organizations have representation in the paper. The news items and feature articles are intended to cover interestingly the full round of campus activities; the illustrative material, including the popular cartoons and candid camera shots, to add distinctive eye appeal.

The Flashlight is distributed to all students and members of the faculty. Nearly a hundred copies of each issue are sent to other colleges and high schools in three states. Through this method the staff keeps in touch with other colleges.

This year a new service has been added to the paper. The alumni now have several columns devoted to their activities. In addition, the Alumni Association is instigating a movement to have the Flashlight sent to all members of the Association. Another innovation is the use of advertisements.

The Flashlight now has an office of its own in the Student Building. It is open daily at stated hours. Here staff meetings are held weekly. At these meetings editors make assignments, hand in finished news stories, and make up the paper. Once a month an evening is held for purely social purposes.



Mr. Darrin



Miss Gillette

A number of new members have been admitted to the staff, mainly from the freshman class. Miss Emma A. Gillette became associate adviser and with Mr. Charles Darrin, faculty adviser, sponsors the Flashlight.

Under the new constitution adopted by the Student Government Association, the Editor-in-Chief of the Flashlight becomes a member of the Student Council.



First Row: Bottiger, Braisted, Trivelpiece, Richley, Damels.  
Second Row: Moore, Nicholas, Frazer, Bailey, Brecher, Hardy, Somerville.  
Third Row: Farrar, Priesler, Varcoc, Ebinger, Snyder.  
Standing: Miner, Ayres, Edgecomb, Aten, Baker, Shelhamer, Bierne, Kilbourne.



Editor—Basil Harris

## *Theta Times*

Theta Times is the annual publication of Theta Chapter of Phi Sigma Pi at Mansfield State Teachers College. Phi Sigma Pi hopes through the editing of Theta Times to renew the ties of brotherhood between the alumni and the active members. If we succeed in some small measure, any endeavor on our part is repaid a thousand-fold.

Theta Times tells chronologically the program of the year's activities. Thus the active brothers have an accurate account of the meetings and other fraternal engagements while the alumni are afforded the opportunity to gain an insight into the present condition of Phi Sigma Pi as to her place in the scheme of things on the campus.

This year we reprinted from a previous issue of Theta Times an interesting, enlightening, educational review of the development of M. S. T. C. from the original Mansfield Classical Seminary to the present day. Theta Times includes also within its pages a summary of events for 1940-41; a roster of active members and alumni; a message of interest from our president and from our sponsor; and a composite picture of the active members of the fraternity.

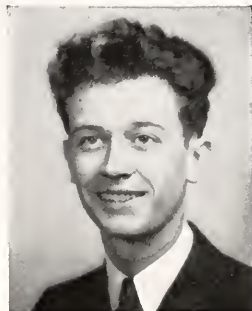
With a firm conviction that we are engaged in a worthy cause, we who edit Theta Times are grateful to serve Phi Sigma Pi in this capacity.



The Cadence, an annual placement publication of the music department, has as its primary objective the aiding of seniors in their purpose of obtaining satisfactory positions. This publication is sent to school boards as an aid to those interested in the choosing of a Music Supervisor who will increase teaching efficiency in their respective schools.

A complete summary of the activities of each music senior is contained in this pamphlet together with individual pictures. A certain amount of space is also reserved for pictures of the various musical organizations as well as condensed articles concerning the activities and accomplishments of each during the school year.

This pamphlet is not devoted entirely to music on the campus but also attempts to give a clear cut view of trends in the field of Public School Music. Our issue this year contains articles written by Dr. Lester K. Ade, President of the College; Bernard Mandelkern, Orchestra Director and instructor at the college; James W. Dunlop, Music Supervisor, Emporium, Pa., Public Schools and President of the P. S. M. A.; Paul R. Zeller, Music Supervisor, East Aurora, N. Y., Public Schools; and Bertram W. Francis, Head of the Music Department at the college. Mr. Dunlop and Mr. Zeller are both former graduates of Mansfield.



Business Manager—Numa Snyder

## *The Cadence*



Editor—Charles Jacobson



Standing—Thomas, Mack, Dykins, Kilbourne, Armstrong, Dorney, Seymour.  
Seated—Satterly, Grigg, Stewart, Bryan, Harris, Bailey, McEwen, Canedy.

## *We Publish A Yearbook*

We, the staff of the 1941 Carontawan, have accepted the responsibility of publishing the yearbook of Mansfield State Teachers College with the idea of giving the student body an annual which will compare in quality to previous volumes, and which will give each and every student something by which he may remember his days at Mansfield. We have tried to represent each organization, each activity, and each group as fairly as possible.

We do not wish to convey the impression that we consider this annual beyond improvement, but we do want our readers to know that we have tried to publish the best possible yearbook. However, it must be realized that there were initial financial misunderstandings which culminated in drastic budget reductions. This necessarily robbed the book of much of its color and final finish which makes a book of perfection.



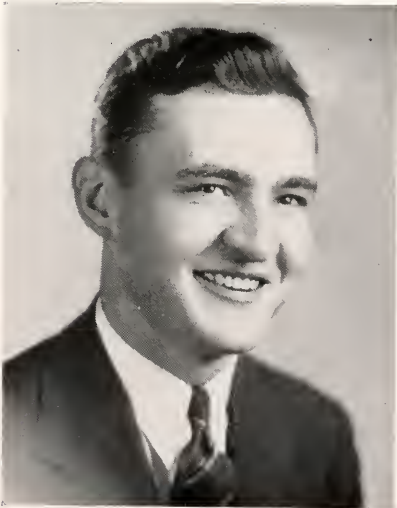
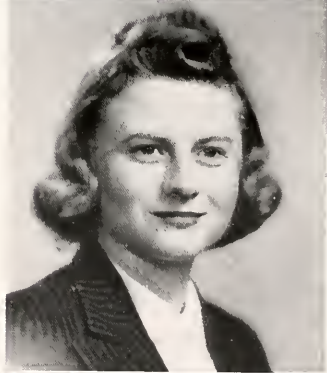
### A WORD FROM THE EDITOR

Allow me to thank you sincerely for your cooperation in helping to publish this annual. Realizing your dual role as students, and as participants in a highly fraternalized society, I am grateful for your efforts and time expended in editing the Carontawan for 1941 at Mansfield State Teachers College. Despite an abundance of fire and lack of money, we have "come through gloriously with flying colors!"

Again, I thank you!

## The 1941 Carontawan

Business Manager — Robert Hendricks.  
Photograph Editor — Roger Bailey.  
Senior Class Editor — Ada DeWalt.  
Faculty Sponsor — Professor G. W. Cass.



Editor — Elmer S. Stevens

## The Y. M. C. A.



### Gospel Team

Cheplick  
Winer, Perkins, Payne, McDermott, Heyler



Cheplick, Heyler, McDermott, Payne, Perkins,  
C. Stewart, J. Stewart, Sturdevant, Winer, Dr. Gwinn, Dr. Steele.

Among the various changes taking place on the campus is the re-organization of the Y. M. C. A. Aside from the fact that the headquarters of the organization have been moved from the "Y" Hut to South Hall, the membership has been changed from one of "general association" to a voluntary basis. Membership is open to all men of the campus upon payment of semester dues.

The purpose of the Y association is to develop the whole of Christian living in its physical, moral, mental and spiritual phases. Christian fellowship is shared and enjoyed through the program of recreation, talks, musicales, entertainments, social activities and devotional periods.

The Y. M. C. A. has for its field work the sponsorship of the College Gospel Team. This interdenominational group has for its purpose a development of spiritual elements within the campus life and to minister spiritual needs in surrounding communities.

The whole program is under the direction of the cabinet members and is sponsored by Dr. Clyde Gwinn and Dr. Paul J. Steele.



## *and Y. W. C. A. Were Most Active*

The comfortably furnished "Y" rooms located on the first floor of North Hall are a perfect setting for the lively and varied activities of the Y. W. C. A.

Every woman student on the college campus is a member of the Y. W. C. A. This organization, a member of the Student Christian Movement, has for its purpose, "To unite in a desire to realize full and creative life through a growing knowledge of God." We determine to have a part in making this life possible for all people. In this task we seek to understand Jesus and follow Him.

The program of the Y. W. C. A. consists of Thursday evening devotional meetings in the nature of lectures or discussions of current social or national problems, conducted by faculty members, local ministers or students, early morning worship services preceding Christmas and Easter week, and candle light services.

The Y. W. C. A. contributes to the social life of the college by teas, pajama parties and an annual dance.



First Row—Roberts, Kwasneski, Devling, English, Jimmerson,  
Second Row—Koch, Hess, Miss Grigsby, Naylor, Botterbush,  
Third Row—Hardy, Smith, Meeker, Fea.h, Strasser, Heasley.





## Art Club

The Art Club each semester sees its membership increased with those persons who attain an "A" in one semester of Art. Members find the club very active in carrying on a worthwhile program of work and study.

The Club is now affiliated with the Eastern Arts Association, an active national organization. With others who are interested, the President as a representative of the club is sent to attend the convention of the Eastern Arts Association. It is here that many new ideas are conceived and incorporated in the Club meetings.

Several projects are undertaken in the course of the year. The club each year has complete charge of the campus decorations for the Christmas holiday season. Work periods this year have included clay modeling and metal tooling of bracelets and watch fobs with the Art Club emblem.

The President, Virginia Clare; the sponsor, Miss Murphey, and the club members have witnessed a gradual development of individual talent and of art appreciation.



First Row—Williams, Weissenfluh, Vollmer, Campbell, V. Clare, Miss Murphey, Harris, Devling, Helman, Evansha, Perkins.  
 Second Row—Canedy, Post, Beck, Boyer, E. Miller, Gamber, Hess, Steigerwalt, Roberts, J. Clare.  
 Third Row—J. Doane, Seipp, Ross, Jimerson, Partrick, Satterthwaite, Baer, Lutz, Huber, Burkhardt, Collins.  
 Fourth Row—B. Doane, Owen, Brotzman, Frazer, McGrath, Cronk, Botterbusch, R. Miller, Kitai, Payne.



Front Row: Kisilewski, Caswell, Burke, Snyder, Mack  
 Back Row: Felix, Mahon, Cawley, Van Norman, Miller, Jones, Fisk.

The Emersonian Literary Society is an honorary organization for Sophomores, Juniors, and Seniors who have high scholastic records. The monthly meetings have been invigorated by interesting speakers in the literary field of education, while the members have been invigorated by delicately prepared refreshments which have followed.

The Emersonian Literary Society brought itself into the lime-light this year particularly well when it presented a Christmas program, "Christmas In Other Lands." Several impersonations by members of the organization added an interesting bit of mirth to the program.

With their understanding sponsor, John Worth Cure, and their capable president, Numa Snyder, the members of The Emersonian Literary Society strive to enrich their literary backgrounds and, like Emerson, develop into all-around scholars. Emersonians feel that the all-around scholar is virtually the best teacher.

## *Emersonian Literary Society*



Omicron Gamma Pi—"Homemaking, to know and to teach" is the motto of every homemaking student and member of the homemaking sorortiy. The membership of the organization is composed of all the girls enrolled in the homemaking department of the college. As a girl is enrolled in the homemaking department she is automatically ready to be initiated into the club.

The club has many varied activities throughout the college year. In the monthly meeting, educational and recreational programs are planned and carried out. The annual dance is one of the large closed dances of the college, and is well attended by both current homemaking students and alumnae. Each year the club sponsors a special publicity event to familiarize other students and other people with the department and its function. In past years there has been a Constitutional Ball, a May Day Festival, and last year a "Gone With the Wind" Dance. This year plans are under way for an elaborate open house for students, students' friends, and students' families. There shall be a smart fashion show, the homemaking girls modeling clothing designed and constructed by themselves this year, followed by a tea in the new Homemaking Building. Each member of the organization will have her part in making the day a success and of graciously receiving guests.

Omicron Gamma Pi is affiliated with the State association of clubs.

*Omicron  
Gamma  
Pi*



Miss Ericksen



First Row—D. Doll, E. Smith, G. Whitmire, D. Boyer, M. Phillips, M. Smith, M. Satterthwaite, H. Patrick, V. Orndorff, L. Helman, H. Davics, R. Lutz, I. Koch.  
 Second Row—A. Davidheiser, Y. Flowers, D. French, M. E. Shlothauer, A. Mushallo, M. Danneker, Miss Ericksen, C. Brotzman, D. Post, M. Emmanuel, N. Greene, R. Steigerwalt, I. Thomas, B. Gayman, E. Woodford.  
 Third Row—Mrs. Morales, P. Plastov, J. Snyder, J. Priesler, S. Evans, L. Owens, E. Hess, B. Gamber, A. Strickland, F. Terwilliger, L. Reynolds, J. McHenry, B. Ferster, I. Bottiger, M. Month, M. Buckwalder, B. Fredricks, Miss Farrer.  
 Fourth Row—J. Lent, M. Garbo, H. McGuire, F. Singlev, A. Blake, A. Maynard, E. Heyd, W. Kidney, M. Brown, S. Metzger, V. Haynes, D. Folchman, E. Burkhart, M. Woodcock, M. McGeehan, L. Howard, A. Brightbill.



First Row—M. Weissenfluh, E. Lownes, J. Trivelpiece, D. Edwards, V. Clare, M. Jones, A. Durkin, C. Etsweiler, R. Dieffenbacher, Z. Shelhamer, L. Dieffenbacher.  
 Second Row—B. Ebinger, E. Bae, V. Dunn, D. Cook, F. All, E. Slout, R. Crispin, J. Bayer, J. Morrison, D. Evansha, A. Smith, R. Dimon, E. Chaffee, G. LaMont, D. Adams.  
 Third Row—E. M. Diem, M. McHood, N. Johnson, P. Kelts, B. Dunbar, B. Strouble, Miss Hancock, Miss Mattson, Mrs. Pamer, Miss Reinhard, H. Monahan, S. Wasley, B. Volmer, J. Mertz, A. Hart, C. Skinner.  
 Fourth Row—E. Hofman, E. Beardslee, J. Wehr, J. Clare, N. Ross, G. Rauch, G. Grove, L. Hess, M. Saxton, M. Morley, G. Botterbusch, H. Hubert, R. Downs, M. Auvil, K. Appleman, J. Moore, B. Shelley.



## Optional Groups

### Camera Club

Due to conflicting interests, the members of the Camera Club could not find a time when all could meet together this year. Since most of the members were seniors, it was apparent that there would remain insufficient "posterity" from which to choose officers for another year; and since there was no demand for work-meetings and scant attendance at business meetings, the officers and sponsors decided to discontinue the club.

The equipment which belonged to the club was presented to the Junior High School for use in the club work there. To any future photography enthusiasts at the college, we bequeath a carefully composed constitution and three very efficient and capable sponsors.

### The French Club

The French Club is an organization under the sponsorship of Mr. Herbert Manser for students who are interested in the French language and culture. Two years of high school French or its equivalent are required for membership.

This year the club devoted its activities to the study of modern music and contemporary musicians. At each meeting a report of current events was given, followed by a group discussion.

The officers of the French Club for 1940-41 were; President, Blanche Caswell; Vice-president, Catherine English; Secretary, Marguerite Abell; Treasurer, Mary Brecher.



First Row—Palmer, Pease.  
 Second Row—Moore, Leff, Mr. Manser, Caswell, English.  
 Third Row—Hardy, Farrer, Hoffman, Robbins, Cronk, All.

## *Developed Initiative and Sociability*



### *The Rurban Club*

The chief aims of the Rurban Club are to promote interest in education and culture in communities with less than 20,000 inhabitants, as well as training in leadership, developing initiative and providing social life for its members. The club is affiliated with the American Country Club Association.

These aims are realized in an annual project, whereby a rural school in the service area receives material benefit. This year the club gave books to increase their limited library. The present members will watch with interest the culminating effect of their activities.

Any student interested in the club activities is eligible for membership. During the past year under the able sponsorship of Dr. Cyril Stout and the leadership of William Stavisky the club profited from many interesting and enjoyable meetings. Other officers of the club were: LeRoy Kilbourne, vice-president; Rachel Mudge, secretary; and Margaret Marshall, treasurer.

### *Classical Club*

The officers of the year 1940-41 were: president, Margaret Nicholas; vice-president, Esther Martin; secretary, Mary Dardenne; treasurer, Jean Moore.

The Classical Club is an outgrowth of the Latin Club of previous years. It aims to create a greater appreciation of classical literature and culture. The club, under the sponsorship of Miss Alice Doane, enjoyed many well-planned programs centered on drama, music and mythology. The outstanding program of the year was the illustrated lecture on the Olympic Games by Mr. S. M. Lloyd. The annual banquet this spring rounded out the program for the year.



## *Musical Organizations*



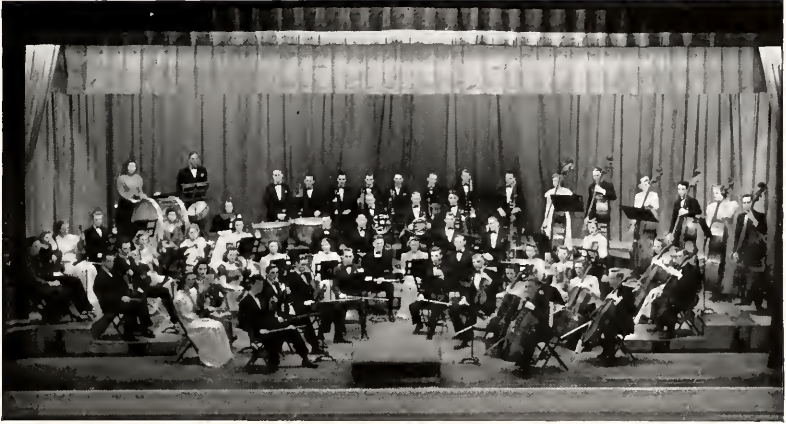
The "Esquires" have performed a double duty this past year by not only dispensing the most danceable of music, but they have been very capable ambassadors of good-will to the many schools and colleges in the district. At least once weekly this group has performed for the enjoyment of dancing couples. Many times have they done their bit for the school and those who know say that their music compares with the best.

Under the direction of Johnny Pyle, with Kep Tiffany handling the business end the "Esquires" have gone places. Many new contacts were established that cannot help but favorably advertise Mansfield State Teachers College. Numa Snyder has handled the arranging in an experienced and distinctive style. The band has been more cooperative this year than ever before and many new features has resulted, and much new equipment has been added. Not only has the standard for performance and type of music been raised but professional appearance has been one of the chief aims.

### *The Esquires*



## *Are the Finest*



### *Symphony Orchestra*

"The orchestra is going to present a program in Straughn Hall tomorrow." These words are sufficient to bring out a great majority of the students to attend the program. While the formal public appearances are eagerly anticipated by the listener, each rehearsal is a separate experience for the active member of the organization. All the skills and knowledge which the student gains in harmony, ear training, and history of music, as well as those gained in the performance on an instrument are enhanced and coordinated through orchestral participation.

An outgrowth of this larger organization has been the forming of several small ensembles which rehearse regularly and come to Mr. Mandelkern for advice and guidance.

The highlight of this season was the formal appearance of the orchestra at the Keeney Theater in Elmira. The soloist on that occasion was Mrs. Rivka Mandelkern, who played the Bruch G minor Concerto. It was an event which will be long remembered by the theater audience of nearly three thousand people and an estimated radio audience of seventy-five thousand.

Planned also for the spring is a short tour and a series of concerts for the larger high schools in the service area. Closing the year is the traditional commencement concert.



### *The Vested Choir*

The membership of the Vested Choir comprises forty-five selected voices chosen from the entire student body. Auditions are held in September at which time the Choir is reorganized each year.

The purpose of the organization is to further the students'

acquaintance with music of many types and periods.

The Choir sings at the monthly vesper services, gives a program in assembly and sings at the baccalaureate service in May. Occasionally concerts are presented in nearby towns.



### *The Advance Chorus*

The chorus of the Music Department at the Mansfield State Teachers College is comprised of all the students in the Department, and is dedicated to the study and performance of the larger choral works of all nationalities and all periods of our musical culture. Under the direction of Mr. J. Alex Gilfillan, participation presupposes cultural and musi-

cal attainment and technical training sufficient for the reading and intelligent appreciation and performance of choral literature of considerable difficulty and content. At the same time, the chorus provides for its members a rich experience in interpreting music in a wide range of periods and styles.



## *Symphonic Band*

The Symphonic Band, under the direction of Mr. Bertram W. Francis, is composed of selected students from the Music Department. General college participation is encouraged, admission contingent upon individual auditions with the Director. The organization has full symphonic band instrumentation providing opportunities for students to study and perform selected compositions from the entire field of band literature. Opportunities are often provided for senior students to conduct the symphonic band. In order to provide a thorough foundation for this conducting experience emphasis is placed on rehearsal procedures, methods, program building and stage presentations. The activities of the band include numerous appearances in assembly concerts both on and off the campus, and radio broadcasts over Station WENY.

During football season the band plays for the games. The snappy music of the college drill band and the maneuvers which were performed between halves added greatly to the athletic events. Again in this activity members are taught how to teach as well as to perform the rudiments of a marching band, correct formations, and intricate maneuvers.



## *The Madrigal Singers*

The Madrigal Singers entered upon their third year with a personnel of three old and five new members. The new members adapted themselves readily to the style of Madrigal singing and the results were most satisfying both musically and from an entertainment standpoint.

Beginning during the Christmas season the singers have made a number of public appearances both on and off the campus. Their repertoire includes Madrigals, folk songs, carols, and songs in modern style.





## The Dramatic Club Has

The Dramatic Club, as a campus organization, contributes in the field of histrionics to fulfill its part in presenting to the student a balanced curriculum. We believe that the student well versed in the fundamentals of dramatic representation and presentation is better able to correlate his abilities with the teaching profession.

Membership in our organization is secured through the medium of competitive try-outs held in September

and February of each college year. The candidates appear before the group to present a selection of their own choice and are judged on the basis of poise and gesture, clarity of articulation, the tone quality of voice, vocal interpretation and total impression. Genuine interest in the club itself as well as demonstrated personal ability determines the admittance of new members.

At our regular monthly meetings, we constructively pursue problems in make-up, costuming, monologues, poetic and other forms of interpretation and quiz hours designed to improve extemporaneous speech.

As their initial offering of the season, the "College Players" presented George S. Kaufman's three act play, "The Butter and Egg Man." The second semester a series of one act plays were produced. These were Banning's "Copy," Wiggin's "The Old Peabody Pew," and Reed's "Be a Little Cuckoo."

The officers were:

President .....	Basil Harris
Vice-president .....	Shirley Gillette
Secretary .....	Mary Brecher
Treasurer .....	Louise Trostel







## *Added Culture*



First Row: Johnston, Farrar, Fisk, Davidheiser, Bower, Schermerhorn.  
Second Row: Braisted, Gillette, Harris, Brecher, Trostel, Chatterton.  
Third Row: Leff, Seymour, Collins, Parente, LaBarr, Swift, Clare.

*School Is Finished*







The People

A green leafy branch illustration, possibly representing a laurel wreath, is positioned to the right of the text 'The People'. The branch starts near the top of the word 'People' and curves downwards and to the right, ending near the bottom of the page. It features several small, pointed leaves along its stem.





With President John Mahon at its head, the 1940-41 Men's Council, under the sponsorship of Dr. Paul J. Steele, has been an indispensable factor in the well being of the Student Cooperative Government Association.

The Men's Council has given a unique opportunity to deserving men students to accept the duties and responsibilities which are of great importance to one who is being trained to take his place in a democratic society. These men in turn have served the college by sponsoring elections, by promoting good will and understanding among the existing student factions, and between the student body and the faculty, and by maintaining the worthwhile customs and traditions of our college.

Acting as a judiciary, the Men's Student Council has been able to maintain reasonable discipline and

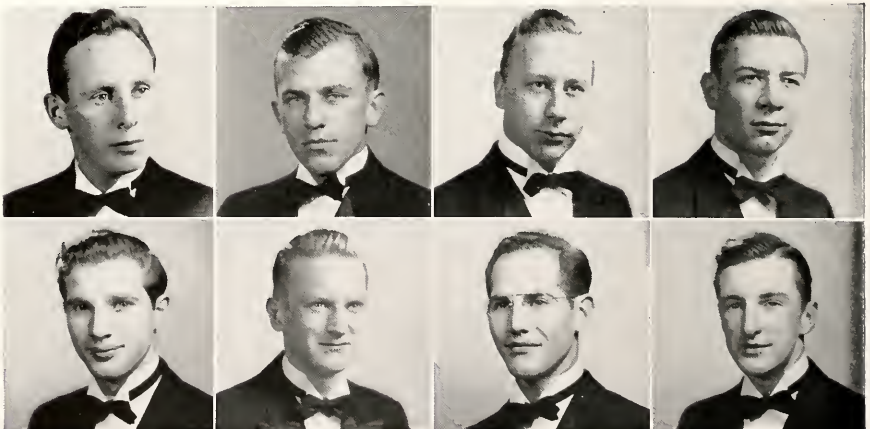


harmony among our men at Mansfield. By delegating its duties and some of its powers to committees and competent individuals, the Men's Student Council has proven itself able to accept and execute efficiently all responsibilities which it has met.

*Men's  
Council*

*The Mansfield Student*

Mahon, Eutsavage, Morgan, Doane.  
Keagle, Pyle, Stavisky, Stewart.





## Women's Council

Each spring the women students elect eleven members whom they believe will represent them fairly and justly in formulating and executing the program of student life. This year the members of the Women's Council, eight of whom reside

in the dormitory, endeavor to build the college program with the welfare of each individual student in mind as well as to formulate policies which will promote self-government among the students.

Projects undertaken by the Women's Council during the year have been the orientation of the freshman women, the planning of weekend activities, the promotion of highest type of dormitory life, the development of accepted practices in the dining room, and the revision of the present system of student representation on the governing council.

The Council believes that the strength of its program is dependent upon the active participation of all students and faculty, and is constantly seeking to stimulate that participation through basic, practical and long-range planning.

## Government Association

Caney, Cawley, Dardene, Felix, Flowers,  
Gregory, Hansel, Moore, Owen, Satterwait, Strangfeld.





# Kappa Delta Pi

Kappa Delta Pi, an honor society in education, limits its membership to juniors and seniors who have attained excellence in scholarship. Since the purpose of Kappa Delta Pi is to encourage high intellectual and scholastic standards and to recognize outstanding contributions to education, emphasis has always been placed on high scholarship.

Kappa Delta Pi grew out of the Illinois Education Club which was established at the University of Illinois in 1909 to recognize and encourage high scholastic achievement and to dignify the teaching profession. In 1911 the Illinois Education Club was reorganized as Kappa Delta Pi. Today Kappa Delta Pi ranks as one of the most influential organizations in the field of education. It embraces one hundred and sixteen institutional chapters. Its roster, studded with many eminent educators, bears approximately 2,500 names. The official organ of Kappa Delta Pi is the "Educational Forum," a quarterly magazine which reflects the ideals of the society.

The Beta Rho Chapter was installed at Mansfield in 1930. Since its inception on the campus Kappa Delta Pi has carved an enviable reputation. This year the activities of the local chapter centered around a program devised to broaden the intellectual and cultural interests of the members. The monthly discussions were worked out by the group in harmony with the objectives of this program. Kappa Delta Pi activities make a definite contribution to the growth and enrichment of its members.

Heading our group are Dr. Doughton and Miss O'Brien, who have always lent us their untiring assistance and guidance. The officers for the year 1940-41 were:

President .....Ruth Miller  
Vice-president .....Jean Bower  
Recording Secretary...Virginia Clare  
Corresponding Secretary .....  
.....Ethel Dimmick





- 1  
 Miller  
 Bower  
 Dimmick  
 Clare  
 Griffin  
 Abell  
 Auvil
- 2  
 Armstrong  
 Bailey  
 Bixler  
 Borden  
 Botterbusch  
 Boyer  
 Brecher
- 3  
 Brecher  
 Burkhart  
 Canedy  
 Carter  
 Caswell  
 Cawley  
 Crispin
- 4  
 Cronk  
 Devling  
 DeWalt  
 Ellis  
 Feredick  
 Flowers  
 Greenough
- 5  
 Grigg  
 Herrman  
 Hill  
 Keagle  
 Kiser  
 Koch  
 Kwasneski
- 6  
 Loomis  
 Mack  
 Marshall  
 Martin  
 Moore  
 Moore  
 Nicholas
- 7  
 Post  
 Satterly  
 Sawyer  
 Shields  
 Smith  
 Snyder  
 Somerville
- 8  
 Steigerwalt  
 Stevens  
 Strangfeld  
 VanNorman  
 Winer  
 Ade  
 Alger
- 9  
 Beknap  
 Doughton  
 Grigsby  
 Morales  
 O'Brien  
 Stout  
 Swan



# Sigma Zeta

Sigma Zeta is a National Honorary Science Society. A local organization at Shurtleff College, Alton, Illinois, served as an embryo for a conservative and steady development of Sigma Zeta since 1925. In 1926 Beta Chapter at McKendree College, Lebanon, Illinois, was installed and in the same year the Society was incorporated under the laws of the State of Illinois; there are now sixteen chapters.

The purpose of this society is: (1) to encourage and foster the attainment of knowledge of the sciences; (2) to recognize the attainment of high scholarship among those fitted for membership.

There are three types of membership—active, associate and honorary. Associate membership is limited to sophomores; active membership to juniors, seniors, and faculty members. Eligibility requires a major or minor in physical science, biological science, or mathematics, coupled with intrinsic qualities of high scholarship and character. Hon-

orary membership is extended to those persons who have rendered conspicuous service in the interest of science and for which the society wishes to show respect.

Lambda Chapter began its affiliation in 1936, and during our brief participation we have been recognized highly by other chapters of Sigma Zeta for our active interests. Lambda Chapter has developed an initiation ritual which is now being recommended as the standard ritual for Sigma Zeta.

Our program for the year has centered about a correlation of parallel interests in the various fields of science. Lectures, movies, student demonstrations, and biographical reports on scientists have helped to carry out our plan. The picnic at Corey Creek Golf Club in the fall and the annual banquet in the spring added to the enjoyment of our gatherings. Mr. Alger and Dr. Steele generously gave their services as co-sponsors for the year.



Master Scientist .....Barbara Armstrong  
Vice-Master Scientist .....Ruth Miller  
Secretary .....Egna Miller  
Treasurer .....Wilton Doane



Armstrong  
 R. Miller  
 E. Miller  
 B. Doane

Bailey  
 Bryan  
 Canedy  
 Carter

Clare  
 J. Doane  
 Frazer  
 Griffin

Grigg  
 Harris  
 Hendricks  
 Kilbourne

Kitaif  
 Koch  
 Loomis  
 McDonald

Marrer  
 Moore  
 Nicholas  
 Seymour

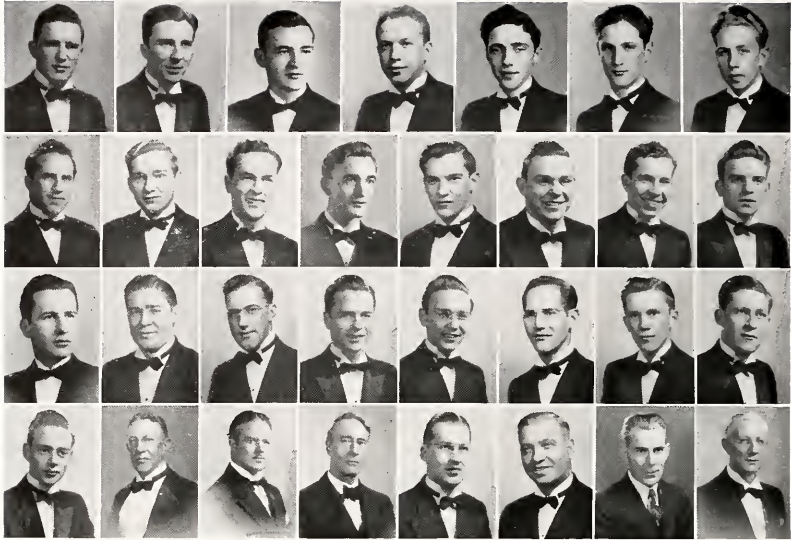
Simmons  
 Smith  
 Stevens  
 Trostel

Theoharous  
 VanGorder  
 Yeager  
 Alger

Beyer  
 Cole  
 Doane  
 Grant

Leberman  
 McKinney  
 Marvin  
 Steele





First Row: Cawley, McDonald, Stevens, Swift, Bailey, Blackwell, Bryan.  
 Second Row: Collins, Dykins, Harris, Hendricks, Jacobson, Jones, Kilbourne, LaBarr.  
 Third Row: McDermott, McGraw, Payne, Perkins, Seymour, Stavisky, Thomas, Van Gorder.  
 Fourth Row: Van Horn, Belknap, Chatterton, Cure, Darrin, Feig, Morgan, Retan.

## Phi Sigma Pi

Phi Sigma Pi, the oldest fraternity on the campus, is an honorary professional fraternity concerned chiefly with two aims, viz., the advancement of educational ideas and ideals and,



McGraw—1941-42 President.  
 Cawley—1940-41 President.  
 Stavisky—1941-42 Student Council President.

secondarily, the fostering of fraternal fellowship. Memberships is limited to upper classmen having superior character and scholarship, thus the fraternity has been able to accomplish its ideals.

Theta chapter has just completed a most ambitious program. Monthly banquets have featured popular speakers. Seasonal functions have featured, the annual picnic in the fall, a strong intra-mural basketball team during the winter and the sponsoring of the Annual Founders Day Banquet followed by the annual formal dance. The fraternity has adopted a standard sweater with the fraternity insignia sewed on it.

The fraternity also celebrated the first anniversary of the Teacher Placement Bureau which promises aid in securing positions for graduating brothers and advancing brothers of our alumni to higher positions. Correspondence with alumni members has been greatly facilitated by sending to our brothers the annual news letter covering the year's work.

The chapter also sent two delegates to the bi-annual national conclave of Phi Sigma Pi held at Atlantic City, New Jersey. It is interesting to note that one or more of its members have been affiliated with nearly every campus organization and activity. This is one of the many things that makes Phi Sigma Pi a leading fraternity at Mansfield.





**PHI SIGMA PI IN ACTION ABOUT THE CAMPUS**

On the diamond

Lifting weights

In the Library

On the tennis court  
In the Intramural Basketball League

On the gridiron  
Learns to shag

Works on 1942 Carontawan  
On the basketball court  
Works on 1941 Carontawan



# Phi Mu Alpha

Phi Mu Alpha is a national musical fraternity for men who show a love for music either by adopting music as their profession or by working to advance the cause of music in America.

Beta Omicron Chapter has, since its installation in 1931, been one of the most active organizations on the campus. This year the chapter sponsored one assembly program, numerous musical programs in the churches and schools of this vicinity, an Artist's course, featuring the duo-piano team, Whittemore and Lowe, a radio broadcast, a sweater hop, an inter-province convention and Alumni week-end, as well as the annual smoker for men of the music department.

In December delegates were sent to the national convention at Cleveland. Roger Keagle, the official delegate, was accompanied by our very capable president, Charles Jacobson, and by Wayne Freas, Harry Cooley, and Dean Morgan.

With a present active membership of some forty men, Beta Omicron feels it has done much to advance the cause of music in America, to foster the mutual welfare and brotherhood of students of music, to develop the truest fraternal spirit among its members and encourage loyalty to the Alma Mater.



Jacobson, Butts, Carpenter, Coleman  
 Craft, J. Doane, W. Doane, Dougherty  
 Freas, Hege, Heyler, Husted  
 Keagle, Lake, Morgan, Moyie  
 Pyle, Richey, Shields, Sickler  
 Snyder, Stewart, Sweigart, Tiffany  
 Webster, Zwally, Belknap, Chatterton, Francis  
 Greeley, Mandelkern, Manser, Warren, Webster

Lambda Mu is an honorary sorority for women music students. To belong to this sorority a girl must have attained the ranking of a second semester sophomore and must be able to meet certain academic and musical standards. Musical talent, personality and integrity of character are also considered for membership. There are two initiations a year, one in the fall which is an alumnae meeting, and one in the second semester.

The aim of the monthly business and social meeting is to give each member an opportunity for solo performance as well as to give educational value. The sorority feels that is very important for every girl to become accustomed to performing before an audience while in college.

Each year the members like to do something that will help the sorority during the following year. This year a phonograph was purchased and it is hoped that it is going to be a great benefit.

The principal group activity this year was the presentation of an assembly program on the campus.



## Lambda Mu



First Row—Greenough, Antonson, McGaven, Fenedick, Kisner.  
 Second Row—Miss Perkins, McCue, Satterly, Harvey, Brister, Miss Brooks.  
 Third Row—Ellis, DeWalt, Sawyer, Borden, Brecher, Strangfeld, Gregory, Mack, Sampson.



Pi Kappa Epsilon is an honorary homemaking sorority, striving for professional, cultural, and inspirational growth. Its object is the furtherance of scholarship and the development of leadership ability among the students of the homemaking department. Homemaking students who have attained an average of 2.4 are invited to join. Prospective members are also judged for their character, qualities of leadership considered through records of activity on the campus, membership in Omicron Gamma Pi, and ability to make and keep friends.

The organization is new on the campus this year and is attempting to establish a worthy reputation in accomplishing the purposes to which the members are pledged. The program for the year has been planned to focus upon the professional, cultural, and inspirational development of the students. Members of the homemaking faculty and guest speakers aid the students in presenting instructive programs. The sorority has also undertaken a research problem concerned with the high school lunchroom. A survey is being conducted among homemaking teachers in Pennsylvania and four adjoining states to determine the number of hours required by the teacher to manage the school lunchroom. The sorority expects to make specific recommendations to school administrators and homemaking teachers on the basis of these findings.

The year's activities are culminated in May by a banquet at the Little Tavern and the formal initiation of the sophomore and junior students who have been invited to join the sorority during the year.



## *Pi Kappa Epsilon*

Eaer, Botterbush  
 Boyer, Clare  
 Griffin, Hess  
 E. Miller, R. Miller  
 Moore, Post  
 Roberts, Steigerwalt  
 Farrer, Morales





Dykens, Brown, Mahon  
Feig, Stout, Webster

# Pi Gamma Mu

Pi Gamma Mu is a National Social Science Honorary Society. As its motto the society has chosen the following words, "Ye shall know the truth and the truth shall make you free."

The society aims toward the inculcation of ideals of scholarship, scientific attitudes, and methods of social service in the study of social problems. In realization of its motto and its aim the Kappa Chapter of Pi Gamma Mu holds monthly meetings at which the intellectual side is broadened by discussions in current topics relating to the field of social science. Among the social activities of the organization, the Founders Day Banquet predominates.

Through no fault of their sponsor or members, the organization has been somewhat inactive this year. This is due to the shortage of students possessing the necessary qualifications of the organization. There seems to be a lack of interest or students majoring in the field of social studies at Mansfield.

The sponsor is Dr. Feig and the president Robert Dykens.



# Class of 1941 . . . . .



Seated—  
 Jones ..... President  
 Miller ..... Secretary  
 Standing—  
 McDonald ..... Treasurer  
 Frenchko ..... Vice-President

Today we have reached one of our goals—our Senior year of college. In retrospect, we recall those hectic days of our Freshman year when our tormentors made life so uncomfortable for us; then those great days when as Sophomores we were able to assist in the orientation of a new Freshman class; then our Junior year when we began to take our place of leadership on the campus; and now the year when we have attained a place of paramount importance on the campus. Our next endeavor shall be to take and fulfill our place in the social order of a democratic state.

May our hope ever be that of living according to that fundamental principle which our Alma Mater has intrusted in us. May our ambition be that of instilling in those we teach that self-same principle, namely, of living together cooperatively.



Dr. Myron Webster—Sponsor



#### A WORD FROM THE SPONSOR

In wishing each of you a successful career, it is good to remember that the only successful person is not necessarily the one who reaches high pinnacles of renown. We are told by holy writ that we live successfully if we keep busy those talents entrusted to us. Even mediocrity becomes exalted when achievement is commensurate with ability.

May you, then, achieve each according to his several abilities, and thus merit the acclaim that men will surely bestow upon you.

Myron E. Webster.



MARGUERITE ABELL—Kappa Delta Pi 3,  
4; Vested Choir 1, 2; French Club 2, 3, 4.  
Treasurer 3, Secretary 4; Y. W. C. A.

BARBARA ARMSTRONG — Carontawan  
Board 4; Organization Editor 4; Day Stu-  
dents' Club 1, 2, 3, 4; Kappa Delta Pi 4; Sig-  
ma Zeta 2, 3, 4; Recorder Treasurer 3, Mas-  
ter Scientist 4; W. A. A. 1; Y. W. C. A. 1, 2,  
3, 4.

RUTH ARMSTRONG—Omicron Gamma Pi  
1, 2, 3, 4; W. A. A. 1, 2, 3, 4; Y. W. C. A. 1, 2,  
3, 4.

CAROL BAILEY—Day Students' Club 1, 2,  
3, 4; Flashlight Board 2, 3, 4, Associate Edi-  
tor 4; Kappa Delta Pi 3, 4; W. A. A. 1, 2; Y.  
W. C. A. 1, 2, 3, 4.



JEAN M. BOWER—Dramatic Club 1, 2, 3, 4;  
Kappa Delta Pi 3, 4, Vice President 4; Omicron  
Gamma Pi 1, 2, 3, 4; Board Member 3;  
W. A. A. 1, 2, 3; Y. W. C. A. 1, 2, 3, 4.

JEAN E. BOWER—Day Students' Club 1, 2,  
3, 4; Y. W. C. A. 1, 2, 3, 4.

MARY ELIZABETH BIXLER—Art Club 4;  
Kappa Delta Pi 3, 4; Omicron Gamma Pi 1,  
2, 3, 4; W. A. A. 1, 3, 4; Y. W. C. A. 1, 2, 3, 4.

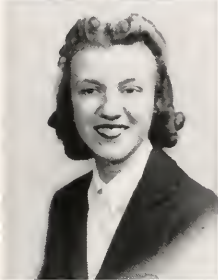
ROGER BAILEY—Carontawan Board 3, 4;  
Photo Editor 4; Day Students' Club 1, 2, 3, 4;  
Phi Sigma Pi 2, 3, 4; Historian 3; Sigma Zeta  
2, 3, 4; Theta Times Staff 3; Y. M. C. A.  
1, 2, 3, 4.





WANDA L. BRACE—Band 1, 2, 3, 4; Chorus 1, 2, 3; Day Students' Club 1, 2, 3, 4; Cpera Club 1, 2; Vested Choir 1, 2, 3, 4; Y. W. C. A. 1, 2, 3, 4.

FRANCES H. BRECHER—Art Club 2, 3, 4; Band 3, 4; Chorus 1, 2, 3, 4; Kappa Delta Pi 4; Lambda Mu 3, 4, Treasurer 4; Music Supervisors' Club 1, 2, 3, 4; Opera Club 1, 2, 3; Orchestra 1, 3; Women's Student Council 3, Recorder 3; Vested Choir 2, 3, 4; Y. W. C. A. 1, 2, 3, 4.



FLORENCE BRISTER—Band 2, 3; Chorus 1, 2, 3, 4; Day Students' Club 1, 2, 3, 4; Lambda Mu 3, 4, Corresponding Secretary 4; Music Supervisors' Club 1, 2, 3, 4, Secretary 4; Orchestra 1, 2, 3; Vested Choir 3, 4; Y. W. C. A. 1, 2, 3, 4.

MARIAN BROWN—Y. W. C. A. 1, 2, 3, 4.



MARY A. BURKE—Classical Club 4; Emersonian Literary Society 3, 4, Secretary 4; Rurban Club 1, 2; W. A. A. 1, 2, 3; Y. W. C. A. 1, 2, 3, 4.

ELEANOR R. BURKHART—Art Club 2, 3, 4; Emersonian Literary Society 3, 4; Kappa Delta Pi 4; Omicron Gamma Pi 1, 2, 3, 4; Y. W. C. A. 1, 2, 3, 4.



MARGERY E. CANEDY—Art Club 2, 3, 4; Carontawan Board 4; Homemaking Editor 4; Kappa Delta P 3, 4; Omicron Gamma Pi, 1, 2, 3, 4; Sigma Zeta 4; Women's Student Council 3, 4; Y. W. C. A. 1, 2, 3, 4.

CHARLOTTE E. CARTER—Band 1, 2; Day Students' Club 1, 2, 3, 4; Kappa Delta Pi 4; Omicron Gamma Pi 1, 2, 3, 4; Rurban Club 3; Sigma Zeta 3, 4; Y. W. C. A. 1, 2, 3, 4.

BLANCHE ELLEN CASWELL—Dramatic Club 3, 4; Emersonian Literary Society 3, 4; Treasurer 4; Kappa Delta Pi 4; Rurban Club 1; W. A. A. 1; French Club 1, 2, 3, 4, Secretary 3, President 4; Y. W. C. A. 1, 2, 3, 4.

GENEVIEVE CAWLEY—Art Club 1, 2, 3, 4; Emersonian Literary Society 2, 3, 4; Kappa Delta Pi 3, 4; Women's Student Council 3, 4, President 4; W. A. A. 1, 2, 3; Y. W. C. A. 1, 2, 3, 4.

VIRGINIA I. CLARE—Art Club 1, 2, 3, 4, President 4; Kappa Delta Pi 3, 4, Recording Secretary 4; Omicron Gamma Pi 1, 2, 3, 4; Pi Kappa Epsilon 4; Sigma Zeta 4; W. A. A. 1, 2, 3, 4; Y. W. C. A. 1, 2, 3, 4, Cabinet 3.

HARVEY W. CLEVELAND—Day Students' Club 1, 2, 3, 4; Y. M. C. A. 1, 2, 3, 4.



MARTHA J. DANNEKER—Art Club 2, 3, 4; Omicron Gamma Pi 1, 2, 3, 4, Vice President 4; W. A. A. 1, 2, 3, 4, President 4; Y. W. C. A. 1, 2, 3, 4.

RUTH DERR CRISPEN—Art Club 1, 2, 3, 4; Chorus 1, 2; Kappa Delta Pi 3, 4; Omicron Gamma Pi 1, 2, 3, 4; Vested Choir 2; Y. W. C. A. 1, 2, 3, 4.

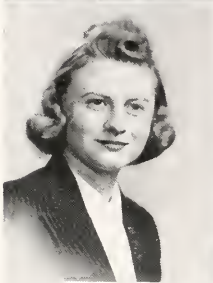
JOHN BERKLY COLEMAN—Band 3, 4; Chorus 1, 2, 3, 4; Madrigal Singers 3, 4; Music Supervisors' Club 1, 2, 3, 4, President 4; Opera Club 1, 2, 3; Phi Mu Alpha Sinfonia 2, 3, 4; Vested Choir 1, 2; Y. M. C. A. 1, 2, 3, 4.

HOMER COLE—Day Students' Club 1, 2, 3, 4; Gospel Team 1, 2, 3, 4; Vested Choir 3; Y. M. C. A. 1, 2, 3, 4.



ANNA KATHRYN DAVIS—Art Club 1, 2, 3, 4; Omicron Gamma Pi 1, 2, 3, 4; Rurban Club 1, 2, 3, 4; Y. W. C. A. 1, 2, 3, 4.

MARY DEMYAN—Omicron Gamma Pi 1, 2, 3, 4; Board Member 4; W. A. A. 1, 3; Y. W. C. A. 1, 2, 3, 4.



ADA DeWALT—Band, 3, 4; Carontawan Board 4, Senior Class Editor 4; Chorus 3, 4; Kappa Delta Pi 4; Lambda Mu 4; Music Supervisors' Club 3, 4; Orchestra 4; Y. W. C. A. 3, 4.

ETHEL MAE DIEM—Camera Club 3, 4; Classical Club 1; Flashlight Board 3, 4; Homemaking Editor 3, 4; Omicron Gamma Pi 1, 2, 3, 4; Rurban Club 4; W. A. A. 1, 2, 3; Y. W. C. A. 1, 2, 3, 4



JOHN HORTON DOANE, JR.—Art Club 4; Day Students' Club 1, 2, 3, 4; "M" Club 1, 2, 3, 4; Phi Mu Alpha Sinfonia 1, 2, 3, 4; Sigma Zeta 1, 2, 3, 4; Men's Student Council 1, 2, 3, 4; Y. M. C. A. 1, 2, 3, 4; Basketball 4; Tennis 1, 2, 3, 4.

WILTON A. DOANE—Art Club 4; Band 1, 2, 3, 4; Day Students' Club 1, 2, 3, 4; "M" Club 2, 3, 4; Phi Mu Alpha Sinfonia 1, 2, 3, 4; Sigma Zeta 1, 2, 3, 4; Y. M. C. A. 1, 2, 3, 4; Basketball 4; Tennis 1, 2, 3, 4.



EDWIN L. DOUGHERTY—Band 3, 4; Chorus 3, 4; Music Supervisors' Club 3, 4; Orchestra 3, 4; Phi Mu Alpha Sinfonia 4; Y. M. C. A. 3, 4.

M. MARCEIL DWYER—Day Students' Club 4; Omicron Gamma Pi 1, 2, 3, 4; W. A. A. 1, 2, 3, 4; Y. W. C. A. 1, 2, 3, 4.

ROBERT CHURCH DYKINS—Carontawan Board, Schools Editor 4; Day Students' Club 3, 4; Phi Sigma Pi 4; Pi Gamma Mu 3, 4; President 4; Y. M. C. A. 3, 4.

MADELYN ELLIS—Band 3, 4; Chorus 3, 4; Kappa Delta Pi 4; Lambda Mu 4; Music Supervisors' Club 3, 4; Opera Club 3, Orchestra 3, 4; Y. W. C. A. 3, 4.

JOSEPHINE M. EARLY—Omicron Gamma Pi 2, 3, 4; Rurban Club 4; W. A. A. 2; Y. W. C. A. 2, 3, 4.

DOROTHY LUISE FELIX—Emersonian Literary Society 3, 4; Kappa Delta Pi 4; Omicron Gamma Pi 1, 2, 3, 4. Administrative Board; Rurban Club 1; Women's Student Council 3, 4. Vice President 4; W. A. A. 1, 2, 3, 4; Y. W. C. A. 1, 2, 3, 4.



JOHN JOSEPH FRENCHKO—"M" Club 1, 2, 3, 4; Pi Gamma Mu 2, 3, 4; Y. M. C. A. 1, 2, 3, 4; Vice President Senior Class; Basketball 2, 3, 4; Tennis 1, 2, 3, 4.

YOLANDE FLOWERS—Day Students' Club 1, 2, 3, 4; Kappa Delta Pi 4; Omicron Gamma Pi 1, 2, 3, 4; Rurban Club 2, 3; Women's Student Council 4; Y. W. C. A. 1, 2, 3, 4.

ALICE L. FISK—Dramatic Club 3, 4; Emersonian Literary Society 4; Flashlight Board 4; Y. W. C. A. 1, 2, 3, 4.

MARCELLA ANNE FENEDICK—Band 3, 4; Chorus 1, 2, 3, 4; Kappa Delta Pi 4; Lambda Mu 3, 4; Music Supervisors' Club 1, 2, 3, 4; Opera Club 1, 2, 3; Orchestra 1, 3; Vested Choir 1, 2; Y. W. C. A. 1, 2, 3, 4.





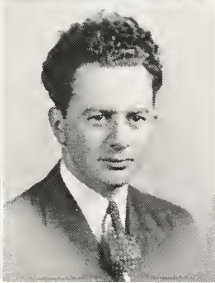
BERNICE I. GAYMAN—Omicron Gamma Pi 1, 2, 3, 4; Rurban Club 2, 3, 4, Treasurer 3; W. A. A. 1, 2; Y. W. C. A. 1, 2, 3, 4.

ESTHER J. GERNERT—Classical Club 4; Emersonian Literary Society 3, 4, Vice President 4; Rurban Club 3, 4; W. A. A. 1, 2, 3; Y. W. C. A. 1, 2, 3, 4.



OLIVE H. GRIFFIN—Kappa Delta Pi 3, 4; Treasurer 4; Omicron Gamma Pi 1, 2, 3, 4, Treasurer 3, President 4; Pi Kappa Epsilon 3, 4; Rurban Club 2, 3; Sigma Zeta 3, 4; W. A. A. 1, 2, 3, 4; Y. W. C. A. 1, 2, 3, 4.

VIOLET EDITH GRIGG—Carontawan Beard, Art Editor 4; Kappa Delta Pi 3, 4; Omicron Gamma Pi 1, 2, 3, 4; Sigma Zeta 4; W. A. A. 2, 3; Y. W. C. A. 1, 2, 3, 4.



ELEANOR MARIAN HARVEY—Band 1, 3; Chorus 1, 2, 3, 4; Lambda Mu 2, 3, 4, Recording Secretary 3, Vice President 4; Music Supervisor's Club 1, 2, 3, 4; Opera Club 1, 2, 3; Orchestra 1, 2, 3, 4; Y. W. C. A. 1, 2, 3, 4.

JAMES HENDRICKS—Band 1, 2, 3, 4; Chorus 1, 2, 3, 4; Music Supervisors' Club 1, 2, 3, 4; Opera Club 1, 2, 3; Orchestra 1, 2, 3; Vested Choir 1, 2; Y. M. C. A. 1, 2, 3, 4.



JEANNE HERRMAN—Kappa Delta Pi 3, 4; French Club 2, 3, 4; Y. W. C. A. 1, 2, 3, 4.

HELEN M. HILL—Day Students' Club 2, 3, 4, Vice President 3, President 4; Kappa Delta Pi 4; Y. W. C. A. 1, 2, 3, 4.

RUTH M. HUGHES—Art Club 3, 4; Carontawan Board 1, 2; Day Students' Club 1, 2, 3, 4; Women's Student Council 3; Y. W. C. A. 1, 2, 3, 4.

PEARL HUNTER—Classical Club 4; Day Students' Club 4; W. A. A. 4; Y. W. C. A. 4.

CHARLES LAWRENCE JACOBSON—Band 1, 2, 3, 4; Cadence Staff, Editor 4; Chorus 1, 2, 3, 4; Gospel Team 2, 3; Music Supervisors' Club 1, 2, 3, 4; Opera Club 1, 2, 3; Orchestra 1, 2, 3, 4; Concertmeister 3; Phi Mu Alpha Sinfonia 1, 2, 3, 4, President 4; Y. M. C. A. 1, 2, 3, 4, Vice President 3.

JESS W. JONES—Emersonian Literary Society 2, 3, 4; "M" Club 1, 2, 3, 4, Treasurer 3; Phi Sigma Pi 3, 4; Y. M. C. A. 1, 2, 3, 4; President Senior Class; Football 1, 2, 3, 4, Co-captain 4; Wrestling 2, 3; Baseball 1, 2, 3, 4.



GENEVA M. KNELLY—Omicron Gamma Pi 1, 2, 3, 4; Y. W. C. A. 1, 2, 3, 4.

ANITA M. KISNER—Band 1, 2; Chorus 1, 2, 3, 4; Kappa Delta Pi 3, 4; Lambda Mu 3, 4; Music Supervisors' Club 1, 2, 3, 4; Orchestra 1, 3, 4; Vested Choir 3, 4; W. A. A. 1, 4; Y. W. C. A. 1, 2, 3, 4.

JOHN KISILEWSKI—Emersonian Literary Society 3, 4; "M" Club 1, 2, 3, 4, President 4; Y. M. C. A. 1, 2, 3, 4; Football 1, 2, 3, 4, Co-captain 4; Baseball 1, 2.

ROGER M. KEAGLE—Band 1, 2, 3, 4; Chorus 1, 2, 3, 4; Kappa Delta Pi 4; Music Supervisors' Club 1, 2, 3, 4; Opera Club 1, 2; Orchestra 1, 2, 3, 4; Phi Mu Alpha Sinfonia 1, 2, 3, 4, Vice President 3, 4; Men's Student Council 3, 4, Treasurer 4; Vested Choir 1, 2, 3, 4; Y. M. C. A. 1, 2, 3, 4.



IRMA N. KOCH—Kappa Delta Pi 3, 4; Omicron Gamma Pi 2, 3, 4; Orchestra 2, 3, 4; Sigma Zeta 4; W. A. A. 2, 3, 4; Y. W. C. A. 1, 2, 3, 4, Secretary 4.



ANGELINE M. KWASNESKI—Day Students' Club 1; Dramatic Club 3, 4; Kappa Delti Pi 3, 4; W. A. A. 1; Y. W. C. A. 1, 2, 3, 4.



MYRTLE LEFF—Band 3, 4; Chorus 3, 4; Dramatic Club 3, 4; Music Supervisors Club 3, 4; Orchestra 3, 4; Vested Choir 4; Y. W. C. A. 3, 4.



CARL LINDQUIST—"M" Club 3, 4; Day Students' Club 1, 2, 3, 4; Y. M. C. A. 1, 2, 3, 4; Baseball 1, 2, 3, 4.



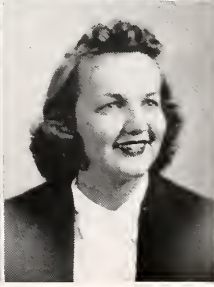
REGINA A. LUTZ—Art Club 3, 4; Omicron Pi 2, 3, 4; W. A. A. 2, 3, 4; Y. W. C. A. 2, 3, 4.



JOHN B. MAHON—Emersonian Literary Society 2, 3, 4; "M" Club 3, 4; Opera Club 1, 2; Pi Gamma Mu, 3, 4; Rurban Club 1; Men's Student Council 2, 4, President 4; Y. M. C. A. 1, 2, 3, 4, Cabinet 3; Dramatic Club 1, 2.



MARGARET MARSHALL—Day Students' Club 1, 2, 3, 4; Kappa Delta Pi 4; Rurban Club 3, 4, Treasurer 4; W. A. A. 1, 2, 3; French Club 1, 2; Y. W. C. A. 1, 2, 3, 4.



RUTH I. MILLER—Art Club 2, 3, 4; Dramatic Club 1, 2, 3, 4; Emersonian Literary Society 2, 3, 4, Treasurer 2, Secretary 3; Flashlight Board 1; Kappa Delta Pi 3, 4, President 4; Omicron Gamma Pi 1, 2, 3, 4; Pi Kappa Epsilon 3, 4, President 3; Sigma Zeta 3, 4, Vice Master Scientist 4; Y. W. C. A. 1, 2, 3, 4, Secretary 3; Secretary Senior Class 4.

JACK MITTAN—Camera Club 3, 4; Y. M. C. A. 3, 4.

DEAN MORGAN—Band 1, 2, 3, 4; Chorus 1, 2, 3, 4; Music Supervisors' Club 1, 2, 3, 4; Opera Club 1, 2, 3; Orchestra 1, 2, 3, 4; Phi Mu Alpha Sinfonia 2, 3, 4, Historian 3, 4; Men's Student Council, Secretary 3, 4; Vest-ed Choir 3, 4; Y. M. C. A. 1, 2, 3, 4.

JOSEPH W. McDERMOTT—Day Students' Club 1, 4; Flashlight Board 3, 4; Gospel Team 3, 4; Phi Sigma Pi 2, 3, 4; Y. M. C. A. 1, 2, 3, 4, Cabinet 3, 4.

LEO F. McDONALD—Carontawan Board 4; 'M' Club 2, 3, 4, Treasurer 3, 4; Phi Sigma Pi 2, 3, 4, President 3, Vice President 4; Sigma Zeta 2, 3, 4; Y. M. C. A. 1, 2, 3, 4; Basketball 1, 2, 3, 4; Baseball 1; Tennis 3.



MARGARET E. NICHOLAS—Art Club 2, 3, 4; Classical Club 1, 2, 3, 4, Vice President 3, President 4; Day Students' Club 1, 2, 3, 4; Flashlight Board 1, 2, 3, 4, Social Editor 2, 3, 4; Kappa Delta Pi 3, 4; Sigma Zeta 2, 3, 4; W. A. A. 1; Y. W. C. A. 1, 2, 3, 4.

DELORES GRACE NEISWENDER—Classical Club 4; Omicron Gamma Pi 1, 2, 3, 4; W. A. A. 1, 2, 3, 4; Y. W. C. A. 1, 2, 3, 4.

MARY McGRATH—Day Students' Club 1, 2, 3, 4; Y. W. C. A. 1, 2, 3, 4; Art Club 3, 4; Classical Club 4.

MARGUERITE McGEEHAN—Chorus 1; Omicron Gamma Pi 1, 2, 3, 4; W. A. A. 1, 2, 3, 4; Y. W. C. A. 1, 2, 3, 4.





MAHLON E. NORTHROP—Day Students' Club 1, 2, 3, 4; Y. M. C. A. 1, 2, 3, 4.

A. ELIZABETH SAMSON—Band 2; Chorus 1, 2, 3, 4; Lambda Mu 4; Music Supervisors' Club 1, 2, 3, 4; Vested Choir 2, 3, 4; Y. W. C. A. 1, 2, 3, 4.



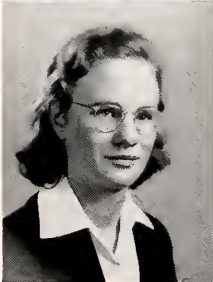
FLORENCE R. SATTERLEY—Band 3, 4; Carontawan Board, Music Editor 4; Chorus 1, 2, 3, 4; Kappa Delta Pi 3, 4; Lambda Mu 2, 3, 4, Corresponding Secretary 3, President 4; Madrigal Singers 2, 3, 4; Music Supervisors' Club 1, 2, 3, 4; Opera Club 1, 2, 3; Orchestra 3, 4; W. A. A. 1; Y. W. C. A. 1, 2, 3, 4.

SARAH JANE SHAFER—Omicron Gamma Pi 1, 2, 3, 4; Rurban Club 3, 4; W. A. A. 1, 2; Y. W. C. A. 1, 2, 3, 4.



GEORGE JOSEPH SHIELDS—Band 3, 4; Chorus 3, 4; Kappa Delta Pi 4; Music Supervisors' Club 3, 4; Opera Club 3; Orchestra 3, 4; Phi Mu Alpha Sinfonia 3, 4; Y. M. C. A. 3, 4.

NELSON E. SICKLER—Band 2, 3, 4; Chorus 2, 3, 4; Music Supervisors' Club 2, 3, 4; Opera Club 2, 3; Orchestra 3, 4; Phi Mu Alpha Sinfonia 2, 3, 4, Treasurer 4; Vested Choir 2; Y. M. C. A. 2, 3, 4.



EMMA SIMMONS—Art Club 3, 4; Day Students' Club 1, 2, 3, 4; Sigma Zeta 2, 3, 4; W. A. A. 2; Y. W. C. A. 1, 2, 3, 4.

ELEANOR J. SLOUT—Omicron Gamma Pi 1, 2, 3, 4; Rurban Club 3, 4; W. A. A. 1, 2; Y. W. C. A. 1, 2, 3, 4.

S. LOUISE SMITH—Kappa Delta Pi 3, 4;  
 Omicron Gamma Pi 1, 2, 3, 4; Sigma Zeta 4;  
 W. A. A. 1; Y. W. C. A. 1, 2, 3, 4.

ELMER S. STEVENS—Carontawan Board  
 3, 4, Editor 4; Kappa Delta Pi 3, 4; Phi Sigma  
 Pi 3, 4, Secretary 4; Rurban Club 2, 3, 4;  
 Sigma Zeta 2, 3, 4; Y. M. C. A. 1, 2, 3, 4, Cab-  
 inet 2, President 3; Basketball Manager 4;  
 Tennis 3, 4; Baseball 1, 2.

MARION E. STRAILEY—Day Students'  
 Club 1, 2, 3, 4; Y. W. C. A. 1, 2, 3, 4.

FLOYD W. SWEIGART—Band 3, 4; Chorus  
 3, 4; Music Supervisors' Club 3, 4; Orches-  
 tra 3, 4; Phi Mu Alpha Sinfonia 3, 4; Vested  
 Choir 4; Y. M. C. A. 3, 4.



ROBERT WEBSTER VAN HORN—Day  
 Students' Club 2, 3, 4, President 3; Dramatic  
 Club 2, 3, 4; Vice President 3; Flashlight  
 Board 3, 4, Editor 4; Phi Sigma Pi 4; Y. M.  
 C. A. 2, 3, 4.

AUSTIN H. THOMAS—Day Students' Club  
 1, 2, 3, 4; Y. M. C. A. 1, 2, 3, 4.

MARY ETHEL TAYLOR—Band 3; Chorus  
 1, 2, 3, 4; Dramatic Club 2, 3, 4; Music Super-  
 visors' Club 1, 2, 3, 4; Orchestra 3; Rurban  
 Club 4; Y. W. C. A. 1, 2, 3, 4, Cabinet 4.

KENNETH SWIFT—Camera Club 3; Dra-  
 matic Club 3, 4; Emersonian Literary Soci-  
 ety 2; Flashlight Board 1, 2, 3, 4, Business  
 Manager 3, 4; Phi Sigma Pi 2, 3, 4, Treasurer  
 4; Rurban Club 1; Y. M. C. A. 1, 2, 3, 4, Cab-  
 inet 2.

FLOYD WHITE—Day Students' Club 4; Y. M. C. A. 4.

CLYDE WAKEFIELD WINER—Band 4; Chorus 2, 3, 4; Day Students' Club 2, 3, 4; Gospel Team 2, 3, 4; Kappa Delta Pi 4; Music Supervisors' Club 2, 3, 4; Opera Club 2, 3, Vested Choir 2, 3; Y. M. C. A. 2, 3, 4, Cabinet 2, 3, President 4.

MADLINE E. WOODCOCK—Day Students' Club 1, 2, 3; Omicron Gamma Pi 2, 3, 4; Y. W. C. A. 1, 2, 3, 4.



MARGARET AUGUSTINE—Day Students' Club 2, 3, 4; Kappa Delta Pi 4; Omicron Gamma Pi 2, 3, 4; Sigma Zeta 4; Y. W. C. A. 2, 3, 4.

ROBERT BOWER—Day Students' Club 3, 4; Dramatic Club 3, 4; "M" Club 3, 4; Pi Gamma Mu 3, 4; Y. M. C. A. 1, 2, 3, 4.

JOHN BUTSAVAGE—"M" Club 1, 2, 3, 4; Pi Gamma Mu 3; Rurban Club 1; Men's Student Council 2, 3, Vice President 3; Y. M. C. A. 1, 2, 3, 4; Basketball 1, 2, 3, 4.

HARRY H. COOLEY—Band 2, 3, 4; Chorus 2, 3, 4; Gospel Team 3, 4; "M" Club 1, 2, 3, 4; Madrigal Singers 4; Music Supervisors' Club 2, 3, 4, Treasurer 4; Opera Club 2, 3; Orchestra 4; Phi Mu Alpha Sinfonia 3, 4; Vested Choir 3; Men's Student Council 2, 4; Y. M. C. A. 1, 2, 3, 4; Wrestling 1, 2, 3, 4.

WILHELMINA L. DEVLING—Art Club 2, 3, 4, Vice President 4; Kappa Delta Pi 3, 4; W. A. A. 1, 2, 3; Y. W. C. A. 1, 2, 3, 4, Cabinet 4.

ETHEL C. DIMMICK—Art Club 1, 2, 3, 4; Kappa Delta Pi 3, 4, Corresponding Secretary 4; Omicron Gamma Pi 1, 2, 3, 4, Board Member 2; Y. W. C. A. 1, 2, 3, 4.

M. CATHERINE ENGLISH—Art Club 2, 3, 4; Camera Club 3, 4; Kappa Delta Pi 3, 4; Y. W. C. A. 1, 2, 3, 4, Cabinet 3, 4.

DRUSILLA E. KENNEDY—Kappa Delta Pi 4; Day Students' Club 1, 2, 3, 4; Y. W. C. A. 1, 2, 3, 4.

WILLIAM S. LANE—Dramatic Club 3, 4, Vice President 4; Y. M. C. A. 3, 4.

ERNEST PARKER—Day Students' Club 1, 2, 3, 4, Treasurer 3; Phi Sigma Pi 3, 4; Y. M. C. A. 1, 2, 3, 4; Wrestling 1, 2, 3.

BETTY WESTBROOK—Emersonian Literary Society 2, 3, 4, President 3; Kappa Delta Pi 4; Pi Gamma Mu 3, 4, Secretary 4; W. A. A. 1; Y. W. C. A. 1, 2, 3, 4.

JEAN WILSON—Band 3; Chorus 1, 2, 3, 4; Music Supervisors' Club 1, 2, 3, 4; Opera Club 1, 2, 3; Orchestra 3; Vested Choir 2; Y. W. C. A. 1, 2, 3, 4.

# Class of 1942 . . . . .



Seated—  
 Hendricks ..... President  
 Standing—  
 Steigerwalt ..... Secretary  
 Johnson ..... Vice-President  
 Garber ..... Treasurer

recently, one of our class members brought more recognition to the Junior class by winning first place on the "Fame and Fortune" program. One of our Junior class members is Concertmeister of the College Symphony Orchestra. Many of the students have gained fame for themselves here at school, and have helped in giving to the Junior class still more recognition.

With the intelligent and ambitious persons in this class, we not only contribute much to the success of M. S. T. C., but will also contribute greatly to the future of our democracy in this country.

With such people as these we shall certainly be able to meet and conquer the problems that will face us in future years, originating from the present worldly strife.

We are proud of our class, and justly so. So to all of you I extend an invitation to watch us forge ahead in our Senior year, the last in our college life here at Mansfield.

In the early part of our Freshman year we were a little shy and backward, but we soon asserted ourselves and gained recognition from all of the upper classmen. In our Sophomore year we kept right on gaining recognition, and kept on soaring to untold heights of success.

Our Junior year was spent in living up to the name we had gained for ourselves in the minds of the one class that remains from our Freshman year, the Seniors; and to all those who have entered Mansfield since our Freshman year we have been a model of deportment and ability.

To illustrate these points:

What other class has had eight men playing in the college dance band? Just



James G. Morgan, Sponsor





#### A WORD FROM THE SPONSOR

As Seniors you will assume responsibilities of intellectual, social and moral leadership within the college community at a very critical period in the world's history. It would be tragic if you should enter your new role of leadership with no appreciation of the problems ahead of your nation and no sense of responsibility of your obligation to our democratic society. You can be of greatest assistance to your country by staying in school and by continuing the normal course of your education. Become better trained to render service when the call comes and resolve to make the most of your opportunities to the end that you may be prepared to serve your country either in time of peace or in time of war.

James G. Morgan, Class Adviser.





FRANCES ALL—Home Making—Stroudsburg, Pa. MINNIE ANDREWS—Elementary—Elmira, N. Y. MARY AUVIL—Home Making—Noxen, Pa. EMMA BAER—Home Making—Salunga, Pa. LAURENCE BAILEY—Music—Mansfield, Pa.

FREDA BEACH—Elementary—Towanda, Pa. MARY HELEN BECK—Home Making—Loysville, Pa. MARION BOCKENWCH—Elementary—Knoxville, Pa. CAROL BOLT—Home Making—Mainesburg, Pa. DOROTHY BORDEN—Music—Ulysses, Pa.

GLADYS BOTTERBUSCH—Home Making—York, Pa. MARY BRECHER—Secondary—Powell, Pa. PEARL BRION—Home Making—Williamsport, Pa. DENA BROWN—Elementary—Canton, Pa. LYELL BUTTERMORE—Music—Connellsville, Pa.

ELAINE CARSON—Elementary—Covington, Pa. ROBERT CAWLEY—Elementary—Eldred, Pa. JOHN CHEPLICK—Secondary—Olyphant, Pa. RUBY COTTER—Elementary—Wysox, Pa. O. BELLE CRONK—Secondary—Stevensville, Pa.

MARY DARDENNE—Secondary—Port Allegany, Pa. ARDATH R. DAVIDHEISER—Home Making—Boyetown, Pa. HAZEL DAVIES—Home Making—Slatington, Pa. MARY M. DAVIS—Home Making—LeRaysville, Pa. ROSEMARY DIMON—Home Making—Rome, Pa.

ROBERT DOWD—Secondary—Wilkes-Barre, Pa. RACHEL DOWNS—Home Making—Alderson, Pa. DORIS E. EDWARDS—Home Making—Clarks Summit, Pa. EVELYN M. EKSTRAND—Elementary—Port Allegany, Pa. EILEEN FINN—Home Making—Lansdale, Pa.

ALICE FRAZER—Secondary—Wyalusing, Pa. MORRIS FREED—Secondary—Luzerne, Pa. PHYLLIS S. FRIEL—Home Making—Wilkes-Barre, Pa. MARY JANE FRITZ—Homemaking. MARY ELIZABETH GAMBER—Home Making—Myerstown, Pa.

MARGARET M. GARBER—Home Making, Mount Joy, Pa. JOHN CRAFT—Music—Connellsville, Pa. SHIRLEY GILLETTE—Elementary—Mansfield, Pa. NORMA GREGORY—Music—Factoryville, Pa. MARIAN M. GREENOUGH—Music—Troy, Pa.





ANNA HANSELL—Elementary—Mensfield, Pa. RUTH HARDY—Home Making—Port Allegany, Pa. FRANKLIN HEGE—Music—Dover, Pa. ROBERT HENDRICKS—Secondary—Mansfield, Pa. ESTHER HESS—Home Making—Lebanon, Pa.

ELIZABETH HOFFMAN—Secondary—Muncy, Pa. HARRIET HUBERT—Home Making—Avalon, Pa. C. LEROY KILBOURNE—Elementary—Wellsboro, Pa. JANE LENT—Home Making—Towanda, Pa. ANGELO LENTINI—Elementary—Wilkes-Barre, Pa.

WILDA LINDER—Elementary—Osceola, Pa. BARBARA LLEWELYN—Elementary—Eldred, Pa. REBECCA LOOMIS—Secondary—Williamsport, Pa. BRUCE MACK—Music—Waverly, Pa. CHRISTINE MACK—Music—Montrose, Pa.

MARY ALICE MAHON—Elementary—Montrose, Pa. ESTHER MARTIN—Home Making—Galeton, Pa. EDNA MILLER—Home Making—Catawissa, Pa. HELEN MONOHAN—Home Making—Lost Creek, Pa. JEAN MOORE—Home Making—Liberty, Pa.



RUTH E. MOORE—Home Making—Wellsboro, Pa. AILEEN MORRISON—Elementary—Ulster, Pa. WILLARD L. MOYLE—Music—Dalton, Pa. DOROTHY MURPHEY—Secondary—Wellsboro, Pa. SIDYL MacMURRAY—Music—Granville Summit, Pa.

JEANNETTE McCARTEN—Secondary—Meshoppen, Pa. RITA McCUE—Music—Ulster, Pa. FRANCIS McGAVIN—Music—Meshoppen, Pa. HELEN A. McGUIRE—Home Making—Smethport, Pa. ROBERTA NAYLOR—Home Making—Factoryville, Pa.

ELEANOR NEILEY—Home Making—Wyalusing, Pa. JUNE NICHOLS—Home Making—Birchardville, Pa. VIRGINIA ORNDORFF—Home Making—New Oxford, Pa. WILLIAM OUGHTON—Music—Wellsboro, Pa. NAOMI PEASE—Secondary—Canton, Pa.

CELIA PEROG—Home Making—Duryea, Pa. MARY H. PHILLIPS—Home Making—Dalmatia, Pa. NICHOLAS PICCOLO—Secondary—Harrisburg, Pa. DOROTHY M. POST—Home Making—Benton, Pa. JOHN PYLE—Music—Donora, Pa.





JOHN S. RACZKOWSKI—Secondary—Mansfield, Pa. ARLENE REEDY—Home Making—Sheridan, Pa. LOLA MIRIAM REYNOLDS—Home Making—Westchester, Pa. PAUL C. RICHLEY—Music—Millheim, Pa. DORA REINBOLD—Elementary—Mainesburg, Pa.

CAROLYN ROBERTS—Home Making—Landenburg, Pa. JACOB RODSKY—Music—Plymouth, Pa. ELEANOR ROSS—Elementary—Nicholson, Pa. LEAH SAWYER—Music—Liberty, Pa. JOHN SEMONICH—Music—Olyphant, Pa.

WILLIAM SHORT—Music—Belmont, N. Y. MALCOLM SMITH—Music—East Mauch Chunk, Pa. RUTH SMITH—Elementary—Wilkes-Barre, Pa. NUMA SNYDER—Music—Lehighton, Pa. JEAN SOMERVILLE—Secondary—Mansfield, Pa.

WILLIAM STAVISKY—Intermediate—Lopez, Pa. JEAN STEWART—Music—Williamsport, Pa. RITA STRANGFELD—Music, Areland, Pa. RUTH K. STEIGERWALT—Home Making—Bowmanstown, Pa. ANN STRICKLAND—Home Making—Westchester, Pa.

MERLE TERRY—Secondary—Athens, Pa. FRANCES TERWILLIGER—Home Making—Eldred, Pa. IRENE THOMAS—Home Making—Drifton, Pa. LOUISE TROSTEL—Home Making—Waverly, Pa. VIVIAN TUCKER—Elementary—Mansfield, Pa.

VERONICA VALLILEE—Secondary—South Waverly, Pa. CLAIRE VAN NORMAN—Primary—Mansfield, Pa. BETTY VOILMER—Home Making—Williamsport, Pa. SARA WASLEY—Home Making—Shenandoah, Pa. LANE WEBSTER—Secondary—Wellsboro, Pa. MARY ELEANOR WOODFORD—Home Making—Elmira, N. Y.



GENEVIEVE ANTONSON—Music—Port Allegany, Pa.  
 ELIZABETH BEIRNE—Secondary—Towanda, Pa.  
 DOROTHY BOYER—Elementary—Lewisburg, Pa.  
 THOMAS BRANNON—Secondary—Wilkes-Barre, Pa.  
 HAROLD BROWN—Secondary—Troy, Pa.  
 CHARLES CARPENTER—Music—Crooked Creek, Pa.  
 MRS. HARVEY CLEVELAND—Elementary—Mansfield, Pa.  
 ELIZABETH CLARK—Home Making—New Milford, Pa.  
 EVA DIXON—Home Making—Wilkes-Barre, Pa.  
 HONORA FUDALA—Home Making—Duryea, Pa.  
 ROMAYN HEYLER—Home Making—Morris Pa.  
 GORDON JOHNSON—Music—Canton, Pa.  
 RACHEL MUDGE—Home Making—Covington, Pa.  
 THOMAS NICHOLS—Music—Smethport, Pa.  
 BETTY RICHARDS—Home Making—Forty Fort, Pa.  
 DORA RINEBOLD—Elementary—Mainesburg, Pa.  
 WALTER SIMCHIK—Secondary—Wilkes-Barre, Pa.  
 RUTH SMITH—Home Making—Wilkes-Barre, Pa.  
 ERNESTINE STUART—Music—Mansfield, Pa.  
 KEPPEL TIFFANY—Music—Corey, Pa.

# Class of 1943 . . . . .



Stevens .....	Secretary
Jacobson .....	Vice-President
Thomas .....	Treasurer
Seymour .....	President

Yesterday we were the Frosh. Tomorrow we shall be Juniors and then, a day later, we shall be Seniors. Now perchance all of that is a trifle too literary or maybe too figurative to suit your varied tastes. If this be so, here are facts, interesting but not ornate.

The Class of 1943 has contributed and shall continue to contribute leaders, backbone, and foresight with which M. S. T. C. may build a better college and produce better teachers.

Last year we smashed into the social life on the campus with the Frosh Frolic, THE dance of the year. Incidentally, our Frolic was not only the biggest Frolic, it was the grandest dance that our Alma Mater has had the good fortune to sponsor. This year we followed through with our patriotic specialty, The Soph Hop. Keep an eye on '43, that is, if you can

see us through the dust we've swished up in our dash along.

Under the tutelage of Miss Janet Leberman, our sponsor, and with the leadership of our president, Arthur Seymour, we have forged ahead and have had a grand time doing it.



Miss Janet Leberman—Sponsor





#### A WORD FROM THE SPONSOR

You are now half-way through your college careers. It is therefore appropriate that you examine your records and plans for the future. All phases of activities and development should be considered.

Are you improving physically, mentally and morally?

What are your records of scholastic achievement?

Have you taken active parts in class and school activities?

What are your ideas or spirits of cooperation, honesty, loyalty, obedience, promptness and responsibility?

If you haven't already done so, now is the time to establish definite goals of attainment for yourselves. Decide where you need to improve, and then—do it!

J. M. Leberman.



DEIRDRE E. ADAMS—Home Making, Crooked Creek, Pa. ENOCH DELLIVAN BLACKWELL—Secondary, Elkland, Pa. ANNE E. BLAKE—Home Making, Newfield, Pa. THELMA E. BOLT—Music, Covington, Pa. DORIS L. BOSTOCK—Music, Mansheld, Pa. LILLIAN E. BRACE—Music, Mansfield, Pa.

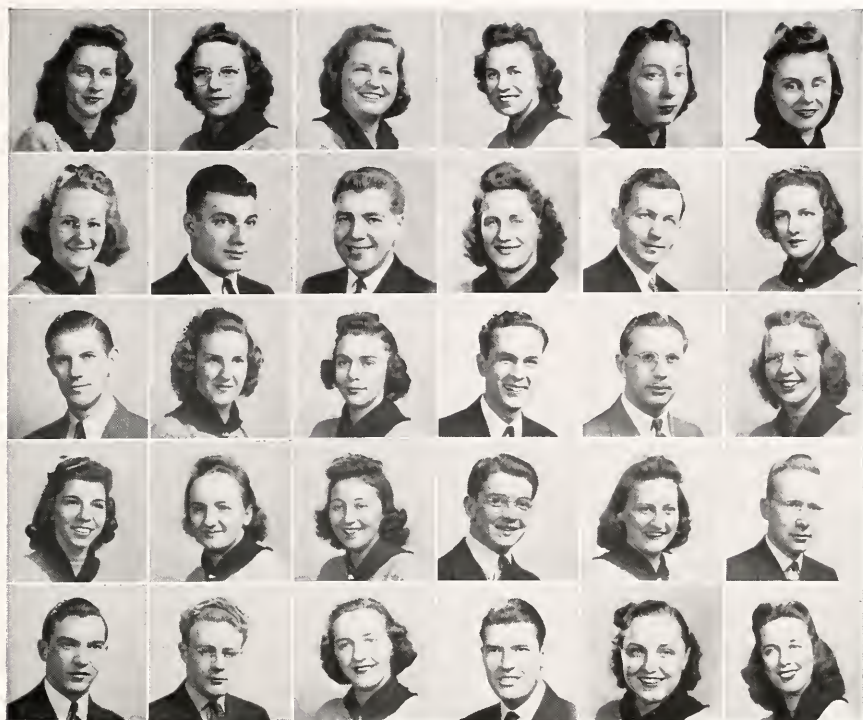
JANET H. BRITTON—Music, Scranton, Pa. CAROL BROTZMAN—Home Making, New Milford, Pa. MADELON BROWN—Home Making, Middlebury Center, Pa. ROSS E. BRYAN, Jr.—Secondary, Mansfield, Pa. EDNAMAE BUCKBEE—Music, Tioga, Pa. LOREN D. BUTTS—Music, Sayre, Pa.

PETTY JANE CAMPBELL—Home Making, Lebanon, Pa. JEAN E. CLARE—Home Making, East Mauch Chunk, Pa. THOMAS FRANCIS COLLINS—Secondary, Wilkes-Barre, Pa. DOROTHY COOK—Home Making, Wyoming, Pa. BESSIE I. CRASS—Elementary, Millerton, Pa. NELLIE CROISDALE—Home Making, Muncy Valley, Pa.

ORIANNA CUNEO—Elementary, Tioga, Pa. ESTHER J. CURREN—Elementary, Gillett, Pa. RUTH I. CUTLER—Music, Drumore, Pa. M. JEAN DAILLEY—Elementary, Genesee, Pa. FRANCES M. DELAPPA—Elementary, Punxsutawney, Pa. PATRICIA DEVLING—Music, Galeton, Pa.

RUTH L. DIEFFENBACHER—Home Making, Bloomsburg, Pa. ELIZABETH A. DIMMICK—Home Making, Lawrenceville, Pa. LEONARD R. DREW—Music, Wellsboro, Pa. VIRGINIA ANNE DUNN—Home Making, Warren, Pa. ANNA MAE DURKIN—Home Making, Ashland, Pa. MAXINE EAVES—Music, Pittsburgh, Pa.





DORCAS EICHELBERGER—Elementary, Eldred, Pa. JANE ELLIOTT—Elementary, Wyalusing, Pa. MARIETTA EMMANUEL—Home Making, Dallas, Pa. KAY ETSWEILER—Home Making, Millersburg, Pa. SARA E. EVANS—Home Making, Loysville, Pa. DOROTHY EVANSHA—Home Making, Sunbury, Pa.

VIRGINIA L. FLEMING—Music, Erie, Pa. THOMAS W. FOSTER, Jr.—Music, Wilkes-Barre, Pa. L. WAYNE FREAS—Music, DuBois, Pa. MARIAN L. FREED—Home Making, Williamsport, Pa. FRANK GERZINA—Music, Erie, Pa. NORMA J. GREENE, Home Making, Keeseville, Pa.

RICHARD GRIFFITH—Music, Williamstown, Pa. ELIZABETH JEANNE HAMILTON—Kind. Primary, Eldred, Pa. EDITH R. HARDY—Secondary, Clarks Summit, Pa. BASIL HARRIS—Secondary, Galeton, Pa. JOHN HARTRANFT—Music, Sugar Loaf, Pa. LUELLA HEASLEY—Music, Rew, Pa.

LOIS HELMAN—Home Making, East Mauch Chunk, Pa. ELIZABETH HEYD—Home Making, Liberty, Pa. CRYSTAL A. HOWEY—Secondary, Wellsboro, Pa. HAROLD HOOVER—Music—Williamstown, Pa. CHARLOTTE HUFF—Kind. Primary, Eldred, Pa. BENJAMIN F. HUSTED—Music, Wellsboro, Pa.

MORRIS JACOBSON—Secondary, Westfield, Pa. CLIFTON JOHNSON—Music, Fleetville, Pa. DOROTHY JOHNSON—Music, Kane, Pa. GORDON JOHNSON—Music, Canton, Pa. NORE-JANE JOHNSTON—Home Making, Coudersport, Pa. MARGARET ANN JONES—Home Making, Stroudsburg, Pa.



MARIAN JUPENLAZ—Secondary—Covington, Pa. CLARENCE E. KEMP, JR.—Music—Shinglehouse, Pa. WILMA KIDNEY—Home Making—Genesee, Pa. MARY JANE KITAIF—Home Making—Douglaston, N. Y. EVELYN L. KNOWLTON—Elementary—Covington, Pa. ANNE MAE KOOCH—Elementary—Lopez, Pa.

ENID KRAMER—Music—Clearfield, Pa. JAMES L. LA BARR—Secondary—New Milford, Pa. C. DAVID LAKE—Music—Sayre, Pa. GRACE LAMONT—Home Making—Wellsboro, Pa. JAMES LIPARULO—Secondary—Olyphant, Pa. ROY N. LOFGREN—Music—Wellsboro, Pa.

SARA E. MANEVAL—Music—Liberty, Pa. JOSEPH A. MARKLE—Secondary—Kingston, Pa. FRANK MARA—Secondary—Dickson, Pa. BETTY JANE MARRER—Home Making—Brackney, Pa. ANNA S. MAYNARD—Home Making—Wellsboro, Pa. ELIZABETH A. MEEKER—Music—Scranton, Pa.

PEARLE MARIE MILLER—Elementary—Williamsport, Pa. JOSEPH M. MOLLAHAN—Secondary—Wilkes-Barre, Pa. MARY E. MORRIS—Kindergarten—Troy, Pa. PAUL H. MULFORD, JR.—Secondary—Wellsboro, Pa. ANNE S. MUSHALLO—Home Making—Lopez, Pa. JACK McCARTEN—Secondary—Meshoppen, Pa.

TERESSA MacDONALD—Music—Union, Pa. THOMAS McGRAW—Secondary—Mansfield, Pa. LEO McGINLEY—Secondary—Mansfield, Pa. ROBERT EMMETT McMULLEN—Secondary—Susquehanna, Pa. WINONA MOON—Elementary—New Albany, Pa. ANNE L. NACHLIS—Elementary—Plains, Pa.







MARGARET L. O'LEARY—Secondary—Wellsboro, Pa. CATHERINE O'REILLY—Elementary—Friendsville, Pa. SARA E. ORNDORFF—Home Making—New Oxford, Pa. HELEN OWEN—Home Making—Mansfield, Pa. F. LENORE OWENS—Home Making—Harrisburg, Pa. PHYLLIS E. PALMER—Secondary—New Albany, Pa.

JOSEPH PAUL PARENTE—Secondary—South Waverly, Pa. HELEN ELAINE PARTRICK—Home Making—Elizabeth, N. J. MARY ANNE PORRETTA—Music—Silver Creek, Pa. DORIS C. PARTCHEY—Intermediate—Lewistown, Pa. CARL M. PAYNE—Secondary—Thompson, Pa. WILLIAM H. PERKINS—Secondary—Montrose, Pa.

CONSTANCE H. PIATKOWSKI—Music—Forest City, Pa. ELAINE REDFIELD—Secondary—Elkland, Pa. JOSEPH E. REED—Music—Connellsville, Pa. EMILY JEAN RIEGEL—Home Making—Shenandoah, Pa. CATHERINE L. ROSS—Secondary—Kempstown, Pa. AGNES VICTORIA RUDNESKI—Secondary—Morris Run, Pa.

IRENE M. RUMSEY—Elementary—Millerton, Pa. MABEL E. SATTERTHWAITE—Home Making—Yardley, Pa. BERNARD T. SCHEIDWEILER—Secondary—Wellsboro, Pa. FRANCES P. SCHERMERHORN—Music—Troy, Pa. HELEN A. SCHLAPPI—Elementary—Mansfield, Pa. DOROTHY STEVENS—Music—Bellefonte, Pa.

RICHARD SEIFERT—Music—Greensburg, Pa. DOROTHY J. SEIPP—Secondary—Damascus, Pa. MARGARET ELIZABETH SEITZER—Elementary—Williamsport, Pa. C. ARTHUR SEYMOUR—Secondary—Jermyn, Pa. BETTY ALICE SHOOP—Music—Richland, Pa. ALTHEA M. SMITH—Home Making—Alderson, Pa.

MARGARET GRANDFIELD SMITH—Home Making—Pineville, Pa. JEAN E. SOUTHWOOD—Home Making—Mt. Carmel, Pa. JACK R. STEWART—Secondary—Wilkes-Barre, Pa. CHARLES STEWART—Music—Wilkes-Barre, Pa. JOHN M. STURDEVANT—Secondary—New Albany, Pa. JANET LIDA SULTZER—Music—Taylor, Pa.

FERNE B. TERRY—Home Making—East Mauch Chunk, Pa. LEWIS THEOHAROUS—Secondary—Mansfield, Pa. DANIEL THOMAS—Secondary—Plains, Pa. HARRY L. THRUSH—Secondary—Penbrook, Pa. KEPPLER TIFFANY—Music—Eric, Pa. HOWARD E. VAN HORN—Secondary—Wellsboro, Pa.

LEWIS G. VAN GORDER—Secondary—Wellsboro, Pa. VIOLET ELSIE VARCOE—Secondary—Waymart, Pa. MARIE M. WEISSENFLUH—Home Making—Warren, Pa. RUTH WHITNEY—Elementary—Tioga, Pa. THOMAS WILLIAMS—Secondary—Wilkes-Barre, Pa. ROBERT EUGENE ZWALLY—Music—Euphrata, Pa.



FRANCES ALL—Home Making—Stroudsburg, Pa.  
ELOISE CHAFFEE—Home Making—Greenwood, N. Y.  
ROBERT DEAN—Secondary—Pennbrook, Pa.  
MARIAM EASTMAN—Music—Wrights, Pa.  
CLEO FRISBIE—Home Making—Eldred, Pa.  
JOSEPH HAYDN—Secondary, Mansfield, Pa.  
MARIAN JIMMERSON—Home Making—Mansfield, Pa.  
RICHARD SHAW—Secondary—Mansfield, Pa.  
F. ROBERT SMITH—Elementary—Canton, Pa.  
RUTH STEBBINS—Home Making—Wellsboro, Pa.  
VALEIDA STRASSNER—Home Making—Lewisburg, Pa.  
WILLIAM WHITE—Secondary—Wellsboro, Pa.

# Class of 1944 . . . . .



## CLASS OFFICERS

Schanbacher	Secretary
Long	President
Peard	Treasurer
Hess	Vice-President

## FRESHMAN CLASS

Mansfield knew that a unique class of freshmen had arrived on Sept. 11, 1940. According to reports that have reached our listening ears, we have certainly turned out to be a class extraordinary. Spunky seems to be synonymous with the class of '44. Every member of the class has found his niche and has entered wholeheartedly into college life.

Why, everybody admits that the Frosh Frolic was the grandest social event of the year. We've had stars in athletics and dramatics as well as in the scholastic field. What's more, we expect to do much better and to participate more extensively in the three years which follow.



Dr. Steele



Miss Wasley





#### TO THE CLASS OF 1944:

As your class advisers, it has been our privilege to observe your progress as you have participated in and contributed to the college activities. You have manifested enthusiasm, a willingness to cooperate, and loyalty throughout this year. As you look forward to the next three years, it is well to remember that, in addition to academic work, college should involve the formation of associations, the establishment of good habits, and the foundation of friendships which will be enjoyed by you throughout life. Develop your interests by participating in extra-class activities. Always remember that each individual is an important member of the college community and his loyalty is essential to the development of fine college spirit.

Again, may we express our appreciation and best wishes to you.

Dorothy M. Wasley  
Paul J. Steele



KATHLEEN APPLEMAN—Home Making—Benton, Pa. MERCEDES ATEN—Elementary—Towanda, Pa. DONALD AYRES—Secondary—Canton, Pa. HOMER BAILEY—Secondary—Mansfield, Pa. BETTY BAKER—Secondary—Tunkhannock, Pa. GEORGE BALDERSON—Secondary—Throop, Pa.

VERA BARRETT—Elementary—Snedekerville, Pa. ELOISE BEARDSLEE—Home Making—Star-rucca, Pa. JOHN BEIRNE—Secondary—Towanda, Pa. JEANNETTE BURTON—Elementary—Susquehanna, Pa. J. CLARK BLOOM—Secondary—Troy, Pa. IRENE BOTTIGER—Home making—Mt. Pleasant Mills, Pa.

RICHARD BRAISTED—Secondary—Mansfield, Pa. RONALD BROOKS—Music—Union City, Pa. EERNARD BRYAN—Music—Sherburne, N. Y. MARY BUCKWALTER—Home Making—Reading, Pa. DOROTHY BUMP—Elementary—Lawrenceville, Pa. MICHAEL CASALE—Secondary—Williamsport, Pa.

JOAN CAWLEY—Music—Eldred, Pa. BARBARA CLENDENEN—Music—Derrick City, Pa. TERESA COPPERSMITH—Music—Emporium, Pa. AUGUSTA CRISS—Elementary—Millerton, Pa. VIRGINIA CROSSLEY—Home Making—Mansfield, Pa. MARIAN CUMMINGS—Elementary—Mansfield, Pa.

MARTIN DAGGETT—Secondary—Millerton, Pa. JAMES DANIELS—Secondary—Sayre, Pa. LOIS DIEFFENBACHER—Home Making—Bloomsburg, Pa. ELEANOR DILDINE—Music—Benton, Pa. DOROTHY DOLL—Home Making—Tunkhannock, Pa. RICHARD DORNEY—Music—Cuba, N. Y. BEATRICE DUNBAR—Home Making—Troy, Pa.





JOHN DWYER—Secondary—Morris Run, Pa. MARIAM EDGCOMB—Elementary—Knoxville, Pa.  
 JEANNE FARRAR—Secondary—Ralston, Pa. MARY JANE FLEITZ—Secondary—Mansfield, Pa.  
 DOROTHY FOLCHMAN—Home Making—West Chester, Pa. BETTY FREDERIC—Home Making  
 —Carlisle, Pa.

DORIS FRENCH—Home Making—Harrison Valley, Pa. BRONWEN GRIFFITHS—Secondary—  
 Mansfield, Pa. BETTY GROVE—Elementary—Bellefonte, Pa. GRACE GROVE—Home Making—  
 Mt. Union, Pa. ROBERT HALL—Secondary—Mansfield, Pa. EDITH HARRINGTON—Elemen-  
 tary—Mansfield, Pa.

CHARLES HARRIS—Music—Sayre, Pa. ALICE HART—Home Making—Forks ville, Pa. VIR-  
 GINIA HAYNES—Home Making—Susquehanna, Pa. DONALD HEATH—Secondary—Wyalusing,  
 Pa. EDWARD HENRY—Music—Lock Haven, Pa. LAURA HESS—Home Making—Williams-  
 port, Pa.

MURIEL HESS—Home Making—Benton, Pa. ELEANOR HOFFMAN—Elementary—New Albany,  
 Pa. FRANCIS HOFFMAN—Home Making—Northumberland, Pa. LUCY HOWARD—Home Mak-  
 ing—Wyalusing, Pa. MABEL JAQUISH—Elementary—Covington, Pa. MARY JETER—Sec-  
 ondary—Dallas, Pa.

DONALD JOHNSON—Secondary—Hop Bottom, Pa. TECLA KINGSLEY—Music—Elmira, N. Y.  
 KATHERINE KUSTER—Elementary—Blossburg, Pa. JOHN LAYMAN—Secondary—Ulster, Pa.  
 KENNETH LEE—Secondary—Forks ville, Pa. JAMES LEOPOLD—Secondary—Westfield, Pa.  
 JACK LONG—Music—Portage, Pa.



EDITH LOWNES—Home Making—Newtown, Pa. HARLOW LYBOLT—Secondary—Tunkhannock, Pa. ROBERT MAGALSKI—Secondary—Larksville, Pa. MARJORIE MAHOOD—Home Making—Troy, Pa. LYDIA MANFRE—Elementary—Wellsboro, Pa. ALDA MANINO—Secondary—Wellsboro, Pa.

ALBERT MARTIN—Secondary—Plains, Pa. JEANNE MATTHEWS—Secondary—Athens, Pa. KEITH MATTISON—Music—Union City, Pa. JUNE MERTZ—Home Making—Northumberland, Pa. SARA FAE METZGER—Home Making—South Williamsport, Pa. MARY JANE MEYER—Secondary—Blossburg, Pa.

CATHERINE MILES—Elementary—Elkland, Pa. ROBERT MINARD—Music—Smethport, Pa. MARIAN MIX—Home Making—Shinglehouse, Pa. JANE MOORE—Home Making—Luzerne, Pa. ANDEW MORDAVANZY—Secondary—Olyphant, Pa. MARY MORLEY—Home Making—Genesee, Pa.

JOHN MORRIS—Music—Wilkes-Barre, Pa. JOAN MORRISON—Home Making—Smethport, Pa. ELAIR MUDGE—Elementary—Wellsboro, Pa. GEORGE MURPHEY—Secondary—Mansfield, Pa. MARGARET MUTH—Home Making—Avon, Pa. MARGARET MacEWAN—Elementary—Kane, Pa.

JAMES McHENRY—Music—Dayton, Pa. JEANNE McHENRY—Home Making—Benton, Pa. ETHEL NICHOLAS—Elementary—Mansfield, Pa. SHERRY PEARD—Music—Williamsport, Pa. ROBERT PIEROTTI—Elementary—Mansfield, Pa. RUTH PINNOCK—Music—LeRaysville, Pa. MURIEL PLASTOW—Home Making—Benton, Pa.







JANET PREISLER—Home Making—Watsonstown, Pa. GLORIA RAUCH—Home Making—Slatington, Pa. MARY RICHMOND—Secondary—Mainesburg, Pa. LEONARD RODSKY—Secondary—Plymouth, Pa. NANCY ROSS—Home Making—Lehigh, Pa. STANLEY ROULENCHICK—Secondary—Olyphant, Pa.

JOYCE SCHANBACHER—Elementary—Mansfield, Pa. MARY SCHLOTHAUER—Home Making—Lancaster, Pa. ZOE SHELHAMER—Home Making—Burwick, Pa. BETTE SHELLEY—Home Making—Luzerne, Pa. JEAN SHERBURNE—Music—Camp Hill, Pa. MELVIN SKERPON—Secondary—Sayre, Pa.

CLAIR SKINNER—Home Making—Tioga, Pa. MARION SLOCUM—Elementary—Millerton, Pa. ELEANOR SMITH—Home Making—Hatfield, Pa. JEANNE SNYDER—Home Making—Dushore, Pa. FREDERICK STEHLE—Music—East Mauch Chunk, Pa. BETTY STROUBLE—Home Making—Trout Run, Pa.

THEODORE SWANSON—Music—Cory, Pa. LARENE THOMAS—Elementary—Canton, Pa. JEAN TRIVELPIECE—Home Making—Danville, Pa. VAN EMMONS—Music—Westfield, Pa. BEATRICE VAN WIE—Secondary—Keating Summit, Pa. MARY WEAVER—Secondary—South Waverly, Pa. JEANETTE WEHR—Home Making—Dalton, Pa.

ELWOOD WELLS—Music—Scranton, Pa. GLADYS WHITMIRE—Home Making—Renova, Pa. JACK WILCOX—Music—Duke Center, Pa. JEANETTE WILSON—Secondary—Mansfield, Pa. THOMAS WILT—Music—Towanda, Pa. STUART WINGATE—Music—Wellsboro, Pa. FRANKLIN WOLFE—Music—Jeannette, Pa.

EARL W. BLESSING—Secondary—Harrisburg, Pa.  
ARLENE BRIGHTHILL—Home Making—Myerstown, Pa.  
ELEANOR JANE BRYAN—Music—Mansfield, Pa.  
LUCY JANE BUSSLER—Home Making—Williamsport, Pa.  
BEULAH CARSON—Secondary—Covington, Pa.  
ROBERT E. CEDER—Secondary—Arnot, Pa.  
ANNA COLE—Elementary—Mansfield, Pa.  
PATRICK J. CUNNINGHAM—Secondary—Wilkes-Barre, Pa.  
JOSEPH ROBERT PATRICK DALEY—Secondary—Mayfield, Pa.  
HELEN L. DUNLAP—Elementary—Muncy, Pa.  
BETTY EBINGER—Home Making—Weatherly, Pa.  
JEANNE IRENE EVANS—Home Making—Woodland, Pa.  
BARBARA ANNA FERSTER—Home Making—McAlistersville, Pa.  
JOHN HAROLD HYDE—Secondary, Troy, Pa.  
DOMINICK JOSEPH MANCIA—Secondary—Wilkes-Barre, Pa.  
WESLEY MARTIN—Secondary, Blossburg, Pa.  
REID T. MITTAN—Elementary—South Montrose, Pa.  
GORDON PALMER—Secondary—Mansfield, Pa.  
THOMAS PRICE—Plains, Pa.  
MARY LOUISE SAXTON—Home Making—Troy, Pa.  
HOWARD C. SHAVER—Secondary—Sayre, Pa.  
FLORENCE CATHERINE SINGLEY—Home Making—Shumans, Pa.  
ANNE CATHERINE SPOERL—Elementary—Wilkes-Barre, Pa.  
MARY JO STUART—Music—Mansfield, Pa.  
ROBERT B. VAN DUSEN—Secondary—Mansfield, Pa.

## *Index To Advertisers*

Baynes Shoe Company .....	126
Coles Pharmacy .....	130
Crossley Greenhouses .....	130
Dairy Store .....	128
H. S. Davis Garage .....	127
Empire Produce Co. ....	132
From a Friend .....	132
Mrs. S. Finesilver .....	127
First National Bank .....	130
Garrison & Myers .....	127
Grit Publishing Co. ....	131
T. W. Judge Co. ....	133
Fred L. Jupenz .....	125
Kingscraft Covers .....	132
Little Tavern .....	133
Charles P. Loomis .....	128
Mansfield Advertiser .....	135
Markson's .....	128
Mansfield Diner .....	127
Mansfield Steam Laundry .....	129
Morris Farms .....	123
Northern Pennsylvania Power Co. ....	133
George L. Palmer .....	126
Rose Chevrolet .....	129
Swain's Music House .....	126
The Fountain .....	129
Tioga Washed Sand & Gravel Co. ....	130
Twain Theatre .....	129
Zamsky Studios .....	134

*For Business or to Visit*

I am always glad to see you in  
my office . . . 19 College Avenue.

*Dr. George L. Palmer, O. D.*



Please remember to reserve a  
date for the 50th Anniversary  
of Football at Our College, this  
Fall. You will always be Wel-  
come to the Town of Mansfield.

*Compliments of  
The Baynes Shoe Co.*



Any Kind of  
GOOD SHOES  
Our Specialty



"TREAT YOUR  
FEET"



*Main Street  
Mansfield, Pa.*

*Swains Music House  
Mansfield, Pa.*

*Publishers and Distributors  
of School Music*

*Many Thanks*

To the Faculty and Stu-  
dents of Mansfield State  
Teachers College for the  
liberal patronage during  
the past 42 years to this  
Leather Shop.

*Fred L. Jupenlaz  
Everything in Leather*



*Compliments of  
Mansfield Diner*

*H. S. DAVIS GARAGE*

Dependable Auto Repairing

Chrysler and Plymouth  
Sales and Service

Goodrich Tires, Tydol Gas  
Veedol Oils

Willard Batteries and Parts  
for all Cars

Citizen's Phone 169-Y

Bell Phone 9052

*Mansfield, Pa.*

*Mrs. S. Finesilver*



Specialist in Women's  
Apparel and Accessories

SPORTS WEAR



*Nelly Don Dresses*

*Sterling Coats*

*Kayser Hose  
and Underwear*

*GARRISON & MYERS*

*"The Clothing Store on  
the Corner"*



Buy College Clothes  
in a

College Town

WE HAVE THEM



*Dry Cleaning and*

*Pressing*

*Tailoring*

*Charles P. Loomis*

○  
Ford Sales and Service  
General Auto Repair Work  
Washing, Greasing, Storage  
REAL SERVICE  
PRICES RIGHT

○  
*Mansfield, Pa.*  
Phone 53

JUMBO MILK SHAKES  
FOUNTAIN SERVICE

○  
THE  
DAIRY STORE  
WELCOMES YOU

○  
DAIRY PRODUCTS  
LIGHT LUNCHES

*Compliments of*  
**MORRIS FARMS**  
*Mansfield, Pa.*

M. S. T. C. Fellows  
will always find the new  
Things FIRST at Markson's

○  
SPORT COATS  
SLACKS  
TOPCOATS  
SUITS—

and other wear at  
popular prices.

○  
MARKSON'S  
*Mansfield, Pa.*

*Compliments of*  
*Twain Theatre*  
*Mansfield, Pa.*

*THE FOUNTAIN*  
*J. L. Bunn, Mgr.*

○  
LUNCHEES  
SODAS  
SPECIAL SUNDAES  
CANDIES

○  
*Spaghetti Dinners*  
*A Specialty*

○  
*Drop In and See Us*

General Motors  
Outstanding Values  
for 1941

*Chevrolet*  
*Oldsmobile*

Modern  
Complete Service  
Anything—Anywhere  
ANYTIME

*Rose Chevrolet*  
*Mansfield, Pa.*

MANSFIELD STEAM  
LAUNDRY

○  
The College Laundry  
wishes success for  
The Class of  
1941

*Congratulations!*

○

This is an invitation to all graduates to avail themselves of this bank's financial services.

○

*First National Bank*  
*Mansfield, Pa.*



© Advertiser Exchange Inc. 1941

OUT  
IN FRONT

The moment you enter our store, you know you are in a *Pharmacy*. Always two registered pharmacists to care for your drug needs and fill your doctor's prescription.

*Coles Pharmacy*  
(On the Corner)

*The*  
*Crossley*  
*Greenhouses*

○

We wish to thank you for your patronage in the past; and we are always ready to serve you in the future in anything you may wish in the florist's line.

○

*Member of Florists'*  
*Telegraph Delivery*

○

*Mansfield, Pa.*

SAND —:—GRAVEL  
BALLAST

○

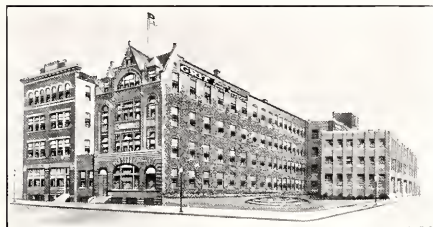
*Tioga Washed Sand and*  
*Gravel Company*  
*Incorporated*



# Ideas

## FOR THE ASKING

Whether it's a yearbook, a booklet, a catalog or a pamphlet, a brochure, broadside . . . whether it's big or little, simple or complex, deluxe or economical . . . our well-equipped and highly-skilled organization is capable of handling it from beginning to end—from originating the idea to preparing the finished job for shipment . . . Call us in while the job is being planned.



*Buildings Occupied Exclusively by Grit Publishing Co.*

## GRIT PUBLISHING COMPANY

Artists Engravers Printers Binders

*The Carontawan was Designed and Engraved in Our  
College Annual Department*

*“Compliments  
of a Friend”*

*Compliments of  
Empire  
Produce  
Company*

○  
*Wholsalers and Distributors  
of Food Products*

This Book is bound in a  
**Kingscraft Cover**



Manufactured by  
Kingsport Press    Kingsport, Tennessee

*J U D G E ' S*  
for  
"GOTHAM"  
Gold Stripe Stockings

"Seamprufe"  
Slips

"GOSSARD"  
Figure Garments

*Nationally Known Merchandise  
at Attractive Prices*

*The T. W. Judge Co.*

*The Little Tavern*

*Chicken Dinners  
are  
Our Specialties*

*We Welcome  
Your Patronage*

"Let us be the house  
by the side of the road  
and be a friend of  
man."

*Mary Nares Keeney  
and*

*Louis Nares*

181 North Main St.  
MANSFIELD, PA.



*Congratulations  
and  
Best Wishes  
for a  
Successful  
Career*

○

*Northern Pennsylvania  
Power Co.*

You cannot patent it . . . . or copyright it . . . . you cannot install it . . . . like a piece of machinery.

You cannot accurately measure it . . . . or the lack of it. Yet it is your most important consideration when you choose your Yearbook Photographer.

It is—

## “Knowing How”

Experience . . . .

is the one thing that will meet the unusual emergency with the comforting statement—“We know just what to do —we’ve been through this before.”

Our complete organization offers you this background of experience in creative photography and consultation on all problems relating to Yearbook Photography.

It costs nothing to talk it over with us.

Zamsky Studios  
Philadelphia



# ANY SERVICE

That we can give to the Year Book Boards is always cheerfully given. We enjoy the conferences with the boards and the aid that we possibly give them in undertaking what to them is a brand new experience.

Our years of printing the Carontawan and other year books and our proximity to our customers, have proved valuable aids to the various boards that have produced books. The fact that we continue to serve them shows that our work is appreciated.

When the present graduates are teaching and planning year books for their schools, we should be pleased to give them the benefit of our advice and help them in any way possible.

May success go with you.

**MANSFIELD ADVERTISER**  
Mansfield, Pennsylvania











